



PROJECT

VANNA VENTURI HOUSE: ACCESSORY DWELLING UNIT

8336 MILLMAN NEIGHBOR DOCUMENTS

DATE

MAY 5, 2022

CLIENT

DAVID LOCKARD

MAY 5 MEETING

MEETING OUTLINE

1. Review of the past 3 neighbor meetings with Subcommittee and Joan Lau
 - A. March 24th meeting - Views, landscape and fence
 - B. April 11th meeting - Views, Elevations and changed landscape
 - C. April 14th - String Line was constructed
 - D. Joan Lau's email with her decision on location and landscape
2. Studies on Navajo Street
 - A. May 5th meeting - LUPZC/HDAC
 - B. May 17th meeting - DRC Meeting
 - C. May 26th meeting - CHCA Board Meeting
 - D. June 1st - ZBA hearing

VANNA VENTURI HOUSE: ACCESSORY DWELLING UNIT

THE GARDEN PAVILION

EXISTING CONDITIONS STRING LINE View from 8336 Millman Deck



VANNA VENTURI HOUSE: ACCESSORY DWELLING UNIT

THE GARDEN PAVILION

EXISTING CONDITIONS STRING LINE View from 8336 Millman Deck



VANNA VENTURI HOUSE: ACCESSORY DWELLING UNIT

THE GARDEN PAVILION

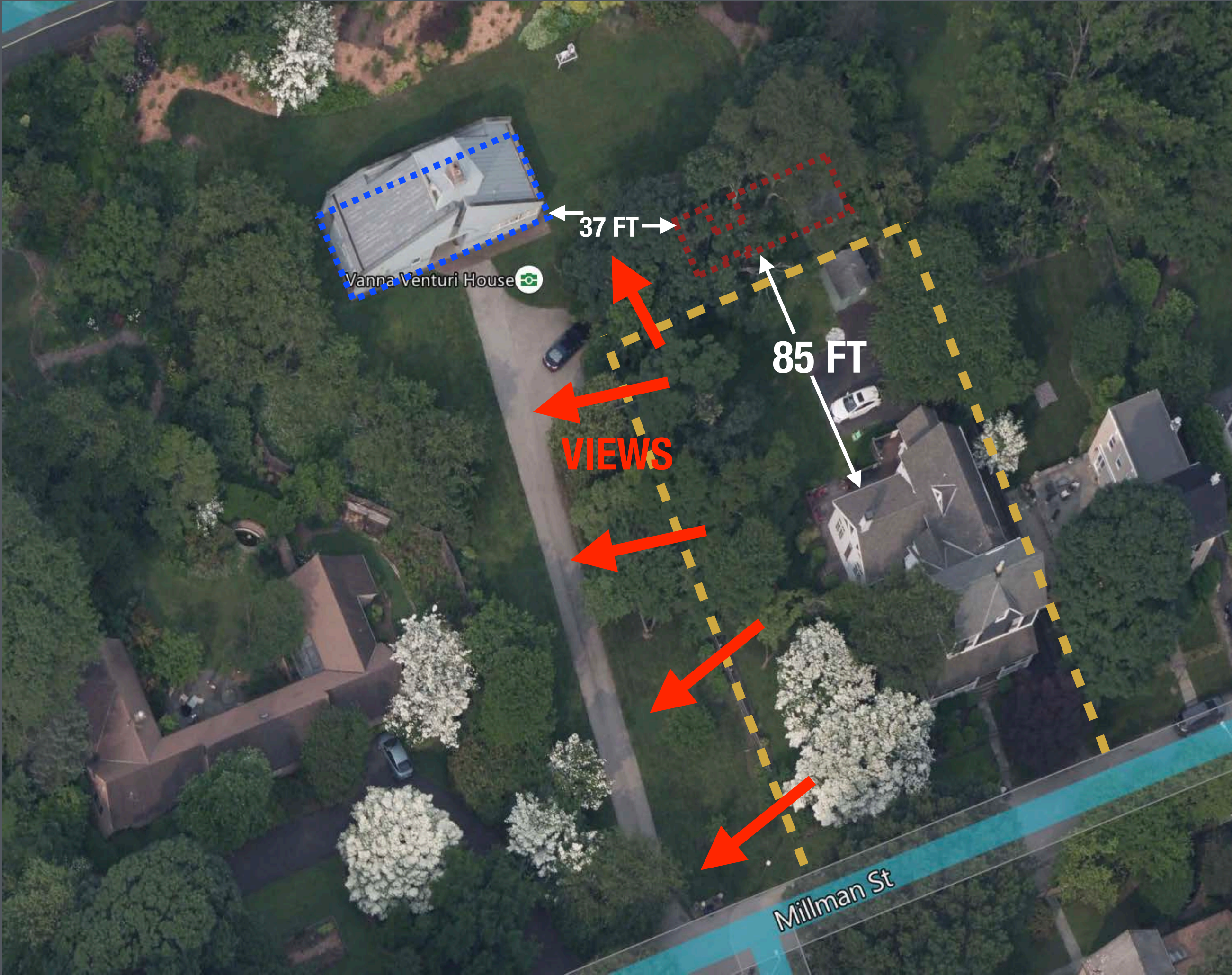
EXISTING CONDITIONS View from 8330 Millman Driveway



VANNA VENTURI HOUSE: ACCESSORY DWELLING UNIT

THE GARDEN PAVILION

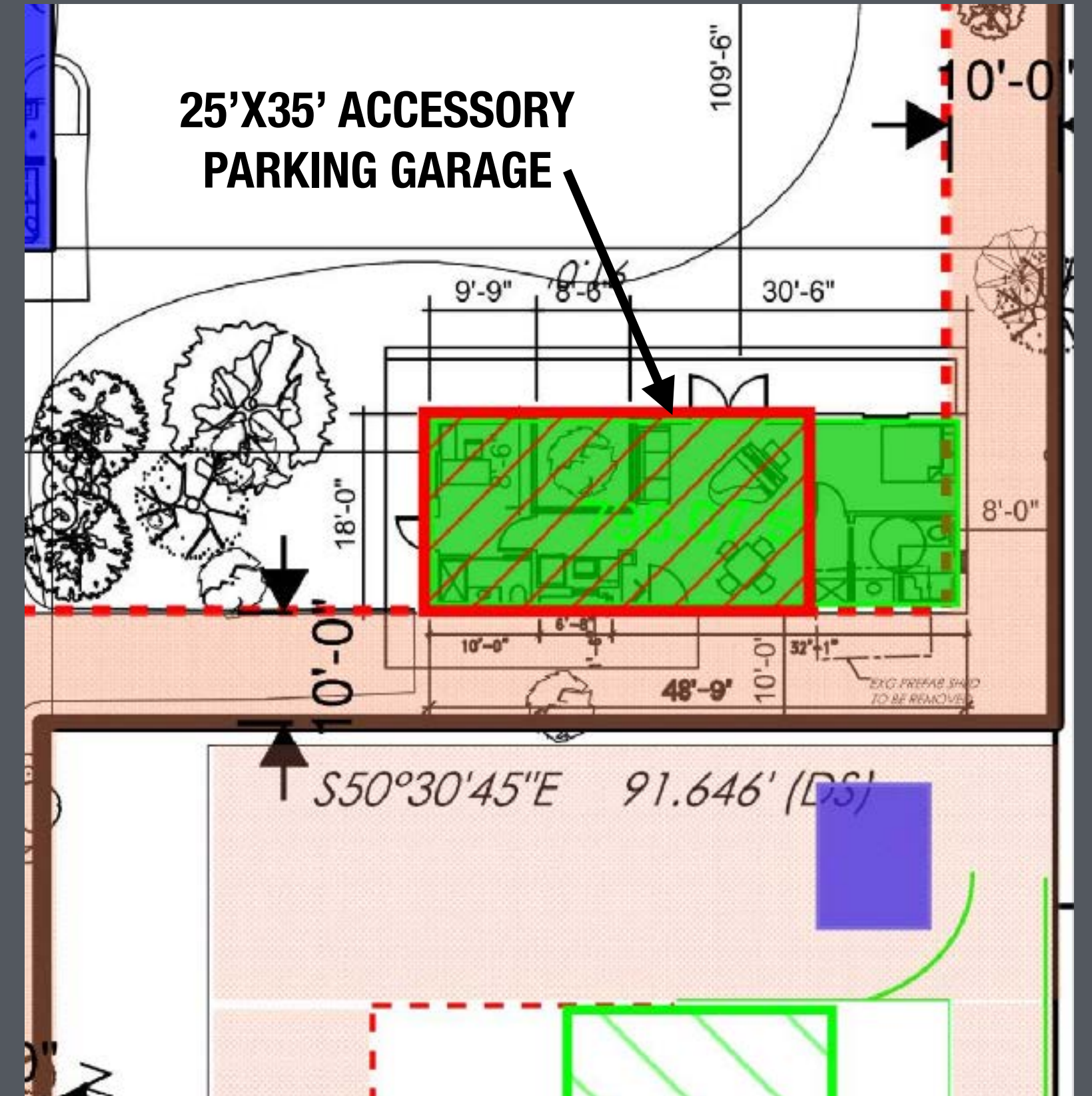
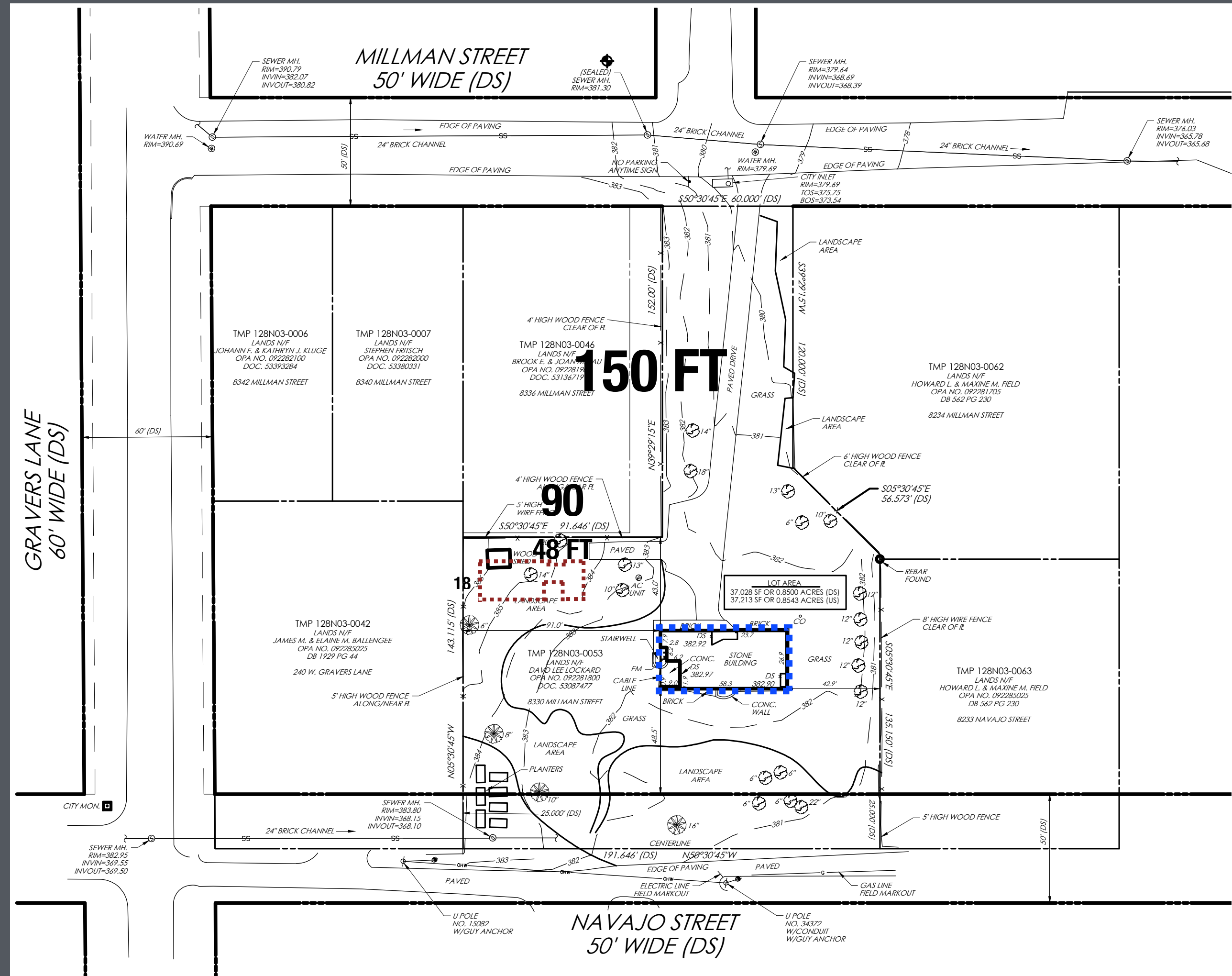
Parking and Shed of 8336 - backside



VANNA VENTURI HOUSE: ACCESSORY DWELLING UNIT

THE GARDEN PAVILION

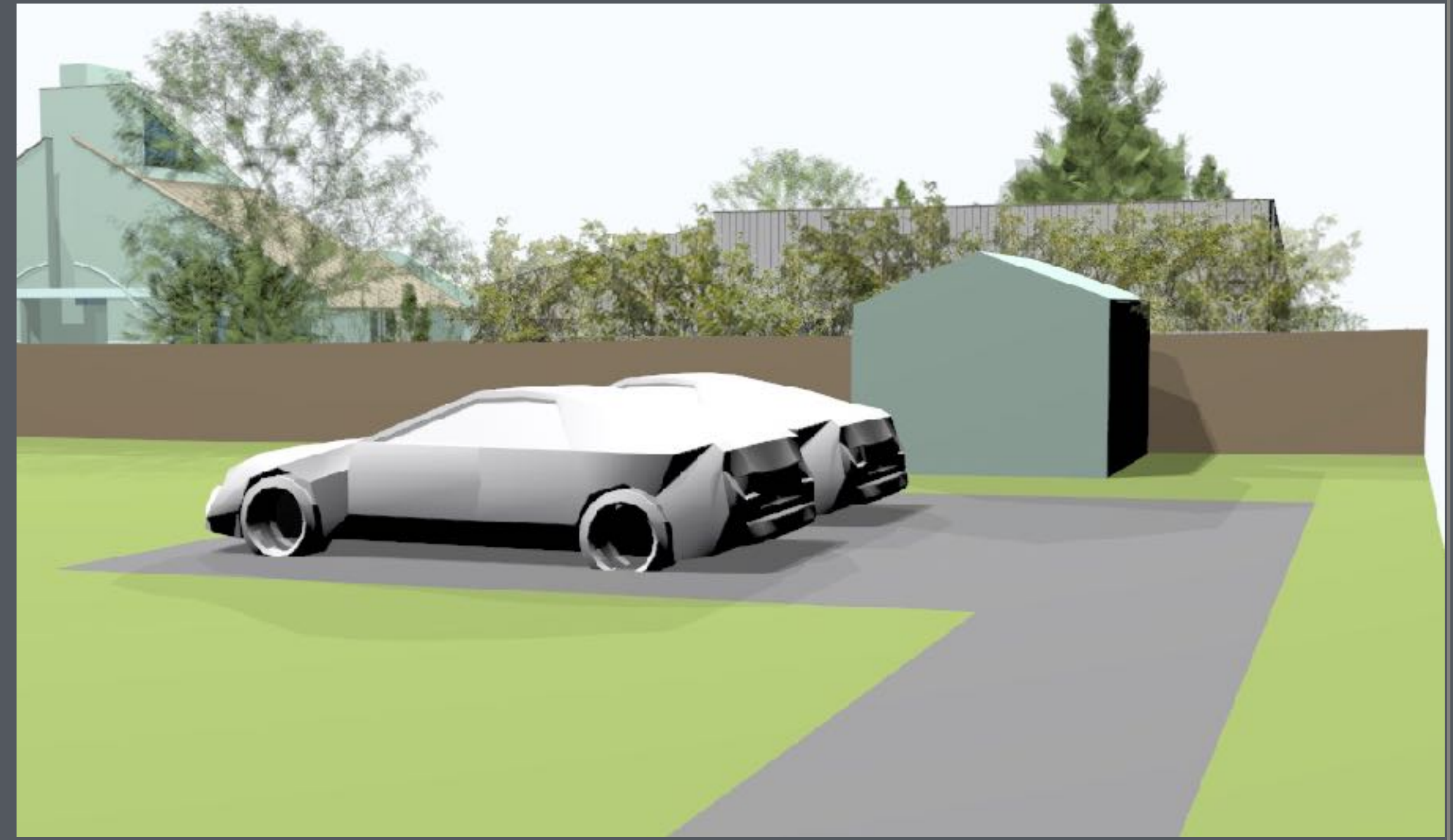
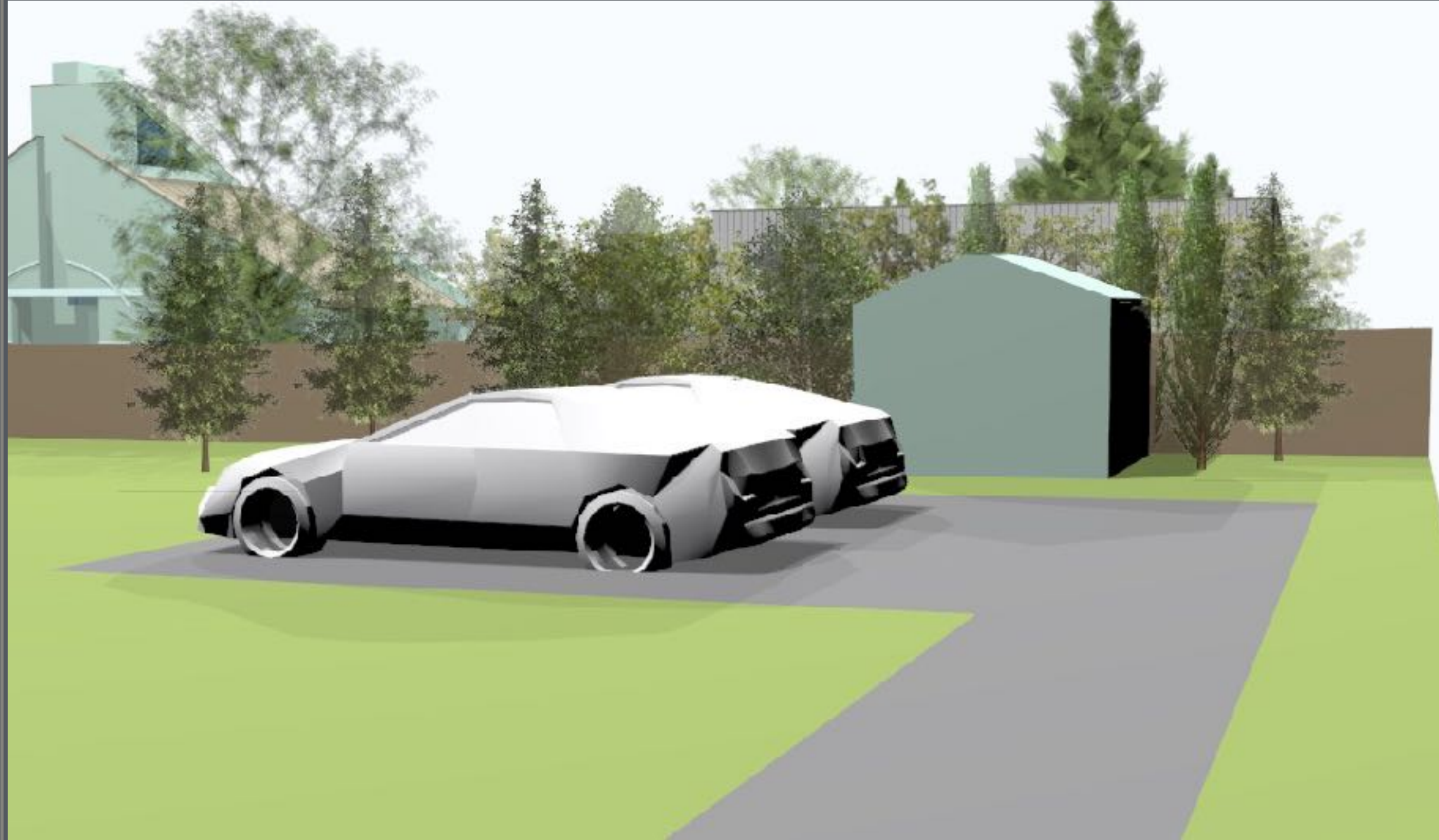
ACCESSORY STRUCTURE BY RIGHT



VANNA VENTURI HOUSE: ACCESSORY DWELLING UNIT

THE GARDEN PAVILION

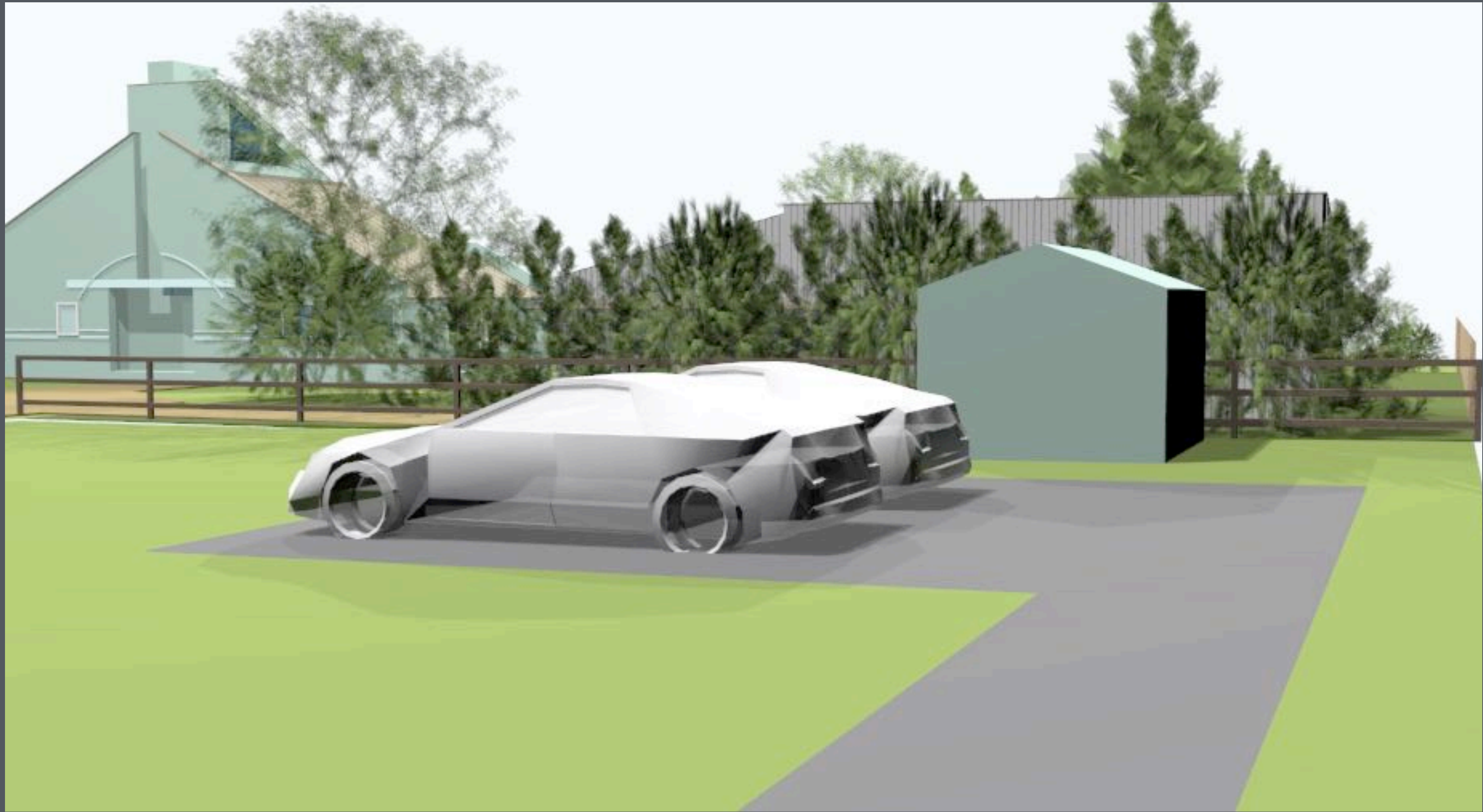
Parking and Shed of 8336 - backside



VANNA VENTURI HOUSE: ACCESSORY DWELLING UNIT

THE GARDEN PAVILION

Parking and Shed of 8336 - backside



VANNA VENTURI HOUSE: ACCESSORY DWELLING UNIT

THE GARDEN PAVILION

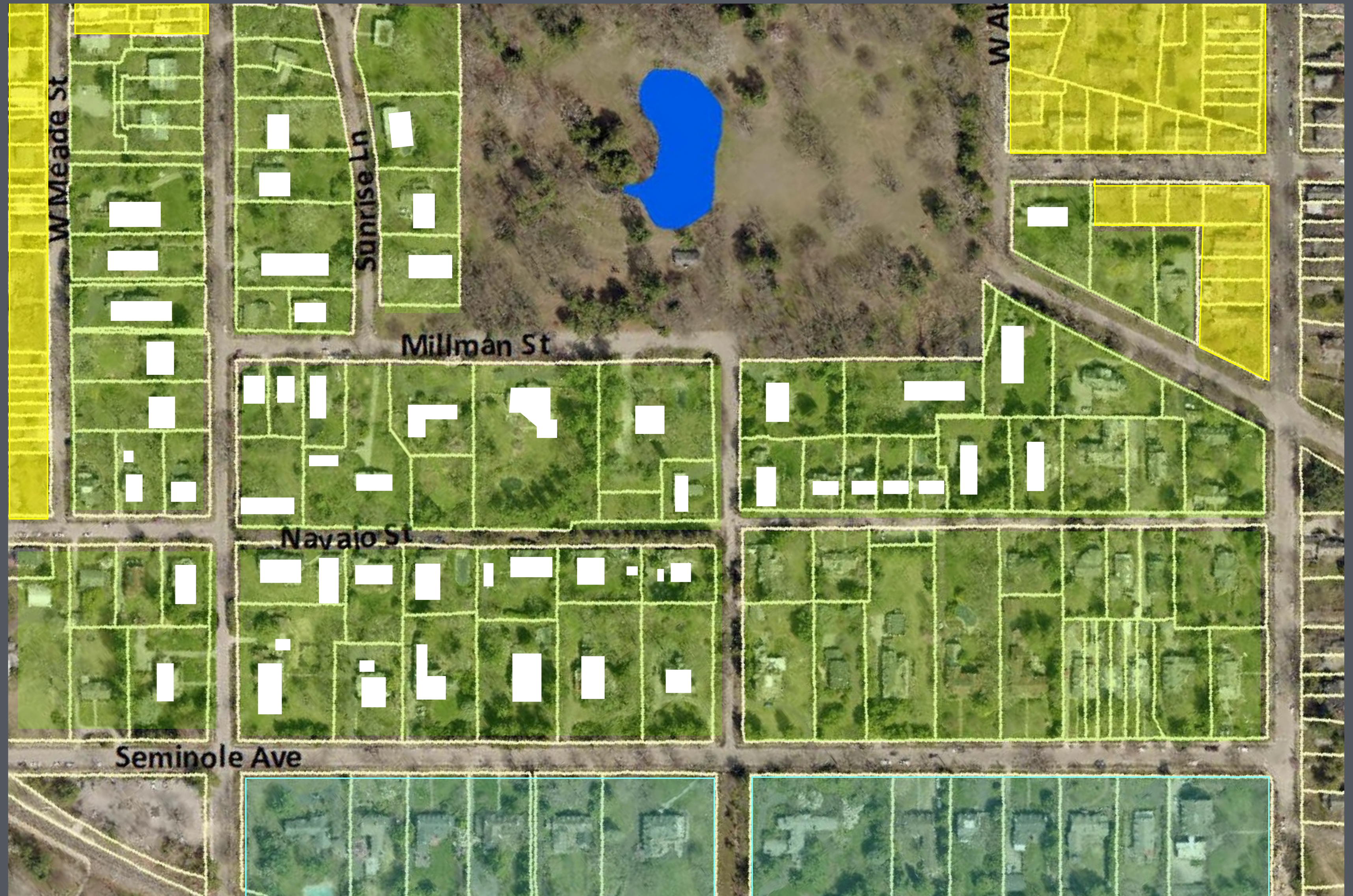
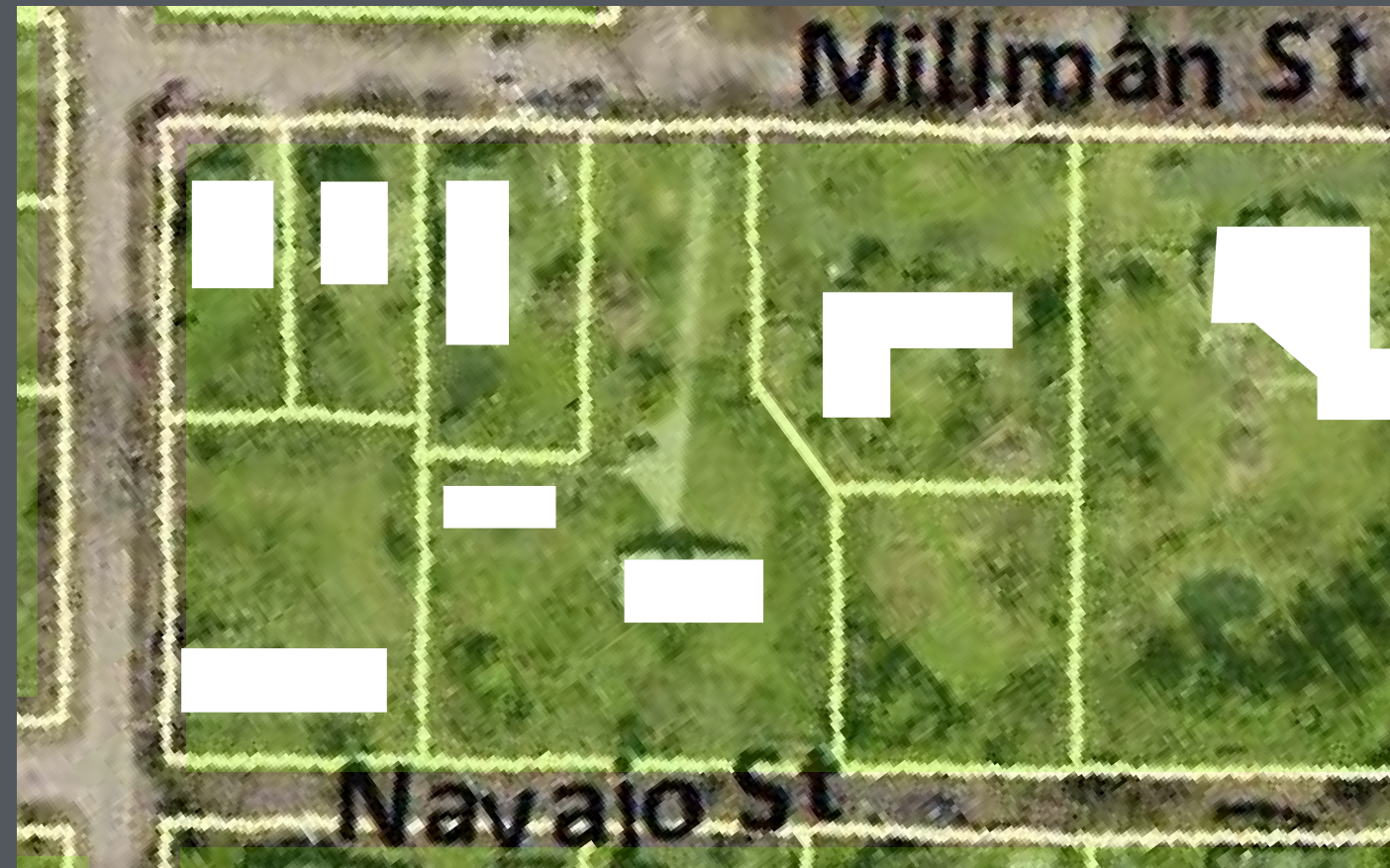
Side View



VANNA VENTURI HOUSE: ACCESSORY DWELLING UNIT

THE GARDEN PAVILION

Density Map



VANNA VENTURI HOUSE: ACCESSORY DWELLING UNIT

THE GARDEN PAVILION

Location	Address	CH Historic Inventory Age	Exterior	House SF/ Lot Acreage	GSF percentage of lot
Subject Property	8330 Millman	1963	Existing Grey/green stucco New ADU to be silver grey wood siding	1875 SF/ .85 ac 2675 proposed	5% existing 7% proposed
West adjoining on Millman	8336 Millman	Ca. 1867	Grey vinyl clad Gothic Revival	3700 SF/ .32 ac	26.5%
West adjoining on Navajo	240 W Gravers	CA. 1868-76	Stucco Gothic Revival	3380 SF/ .44 ac	17.6%
East adjoining on Millman	8300 Millman	1956	Brick ranch	X SF/ approx. .5 ac	
Millman block	8340 Millman	Ca. 1867	Stucco side gable	2500 SF/ .18 ac	30.5%
Millman and W Gravers	8342 Millman	Ca. 1868	Stucco Gothic Revival	2625 SF/ .18 ac	32%

VANNA VENTURI HOUSE: ACCESSORY DWELLING UNIT

THE GARDEN PAVILION

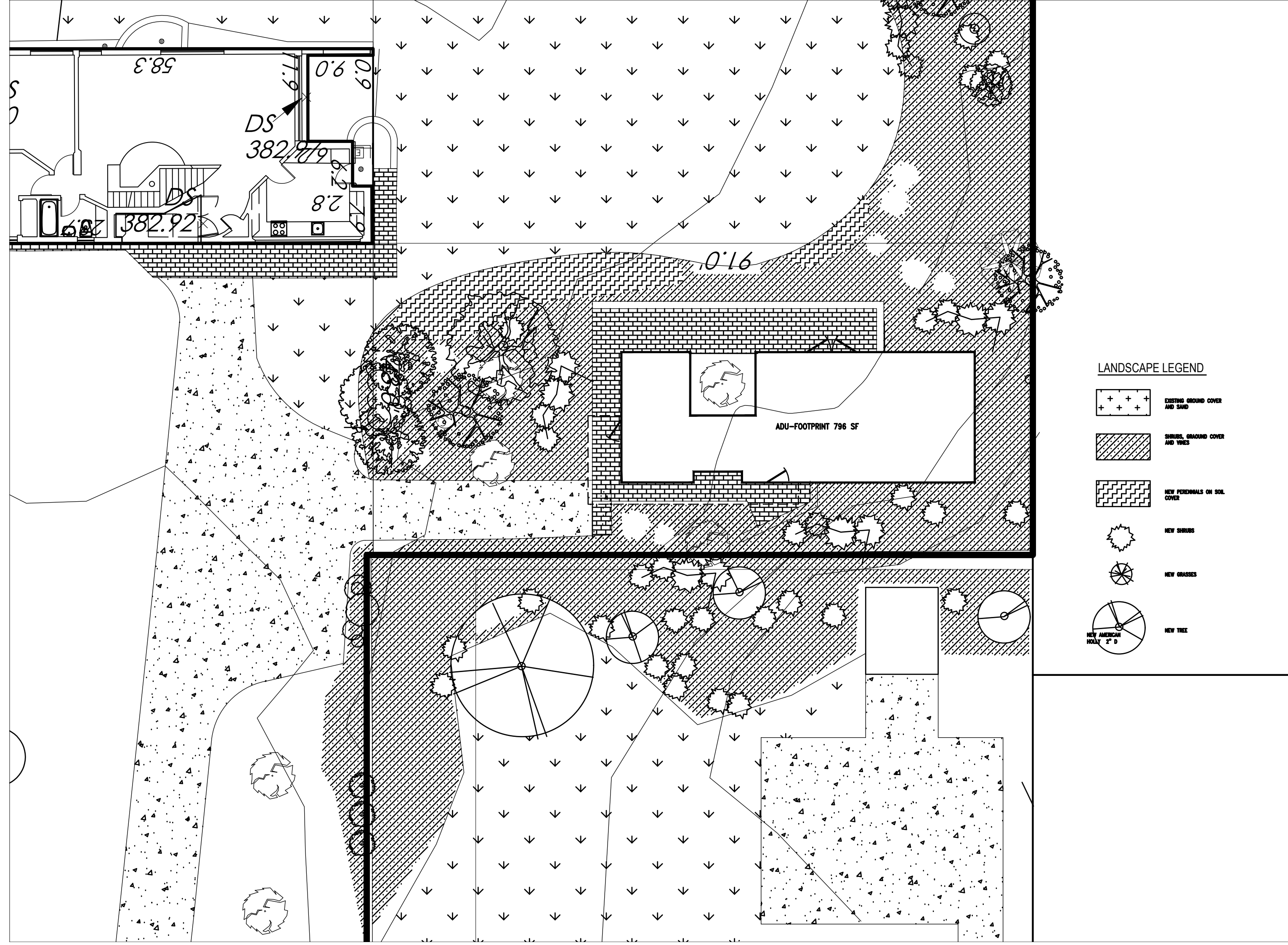
Rendering



VANNA VENTURI HOUSE: ACCESSORY DWELLING UNIT

THE GARDEN PAVILION

Landscape Plan



VANNA VENTURI HOUSE: ACCESSORY DWELLING UNIT

THE GARDEN PAVILION

TYPES OF VEGETATION FOR PRIVACY PLANTINGS



MIXTURE / LAYERING

LEYLAND CYPRESS

VANNA VENTURI HOUSE: ACCESSORY DWELLING UNIT

THE GARDEN PAVILION

TYPES OF VEGETATION FOR PRIVACY PLANTINGS



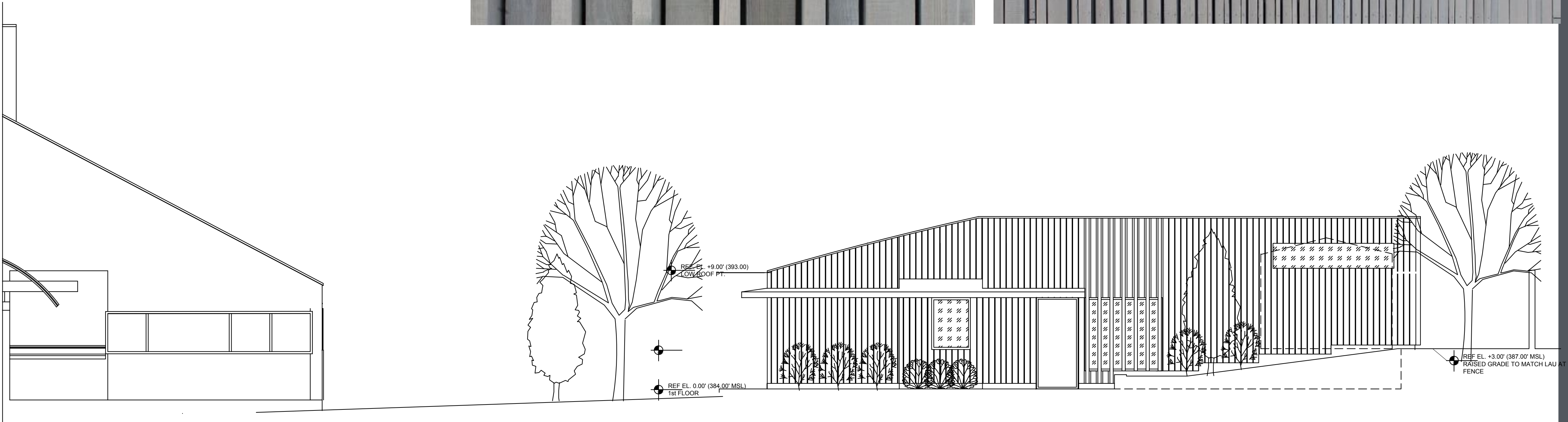
TIERS

VANNA VENTURI HOUSE: ACCESSORY DWELLING UNIT

THE GARDEN PAVILION

ELEVATIONS

Option 1

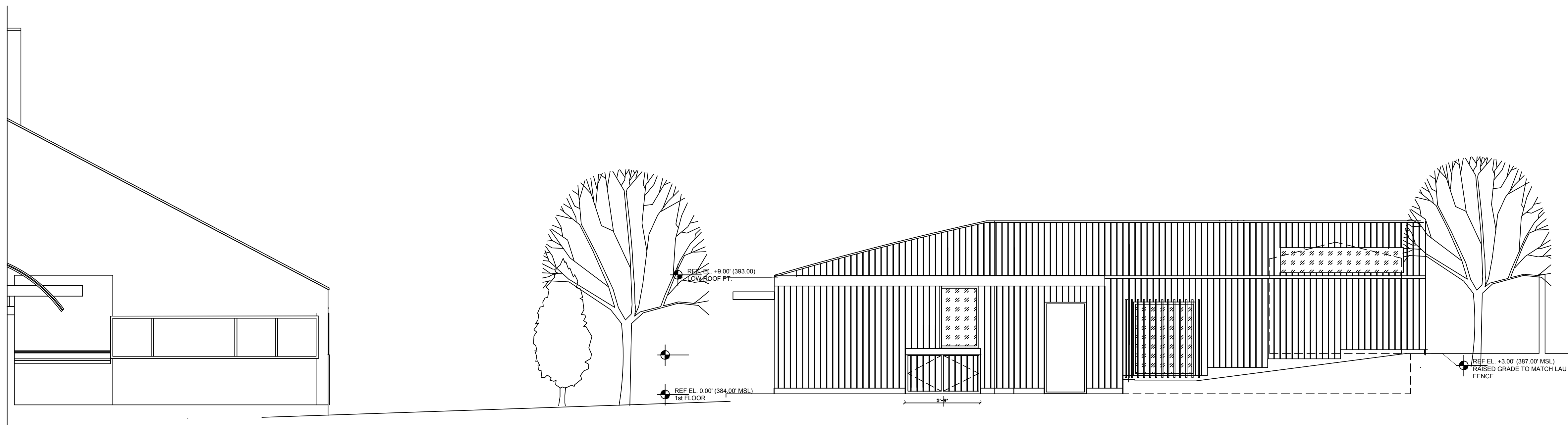


VANNA VENTURI HOUSE: ACCESSORY DWELLING UNIT

THE GARDEN PAVILION

ELEVATIONS

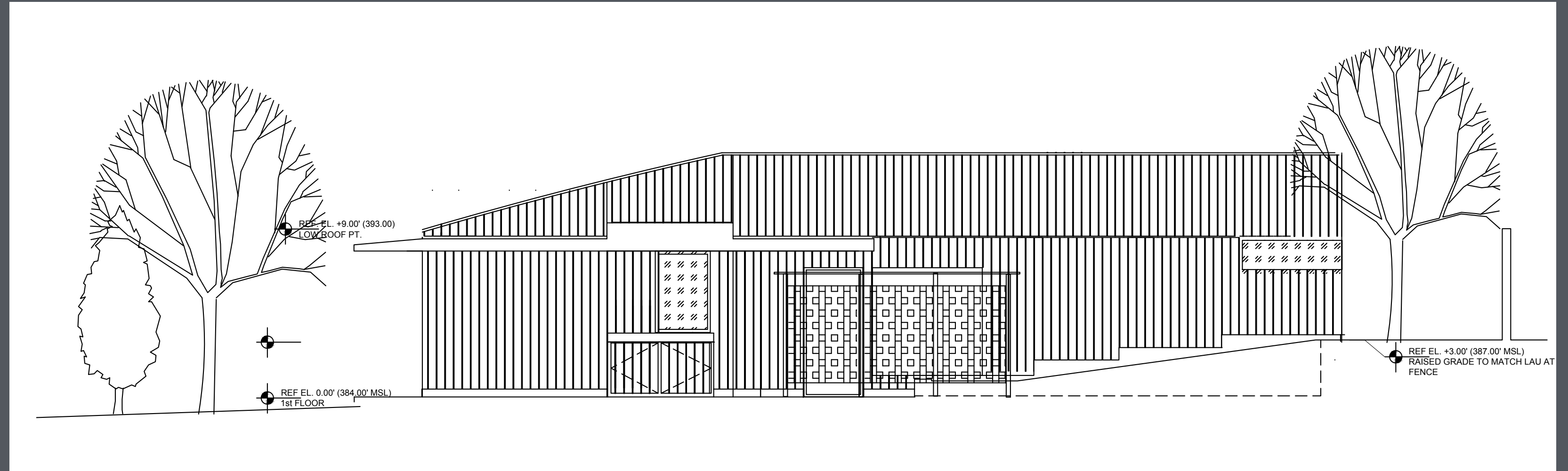
Option 2



VANNA VENTURI HOUSE: ACCESSORY DWELLING UNIT

THE GARDEN PAVILION

ELEVATIONS Architectural Trellis/Screen Venturi Inspired Patterns

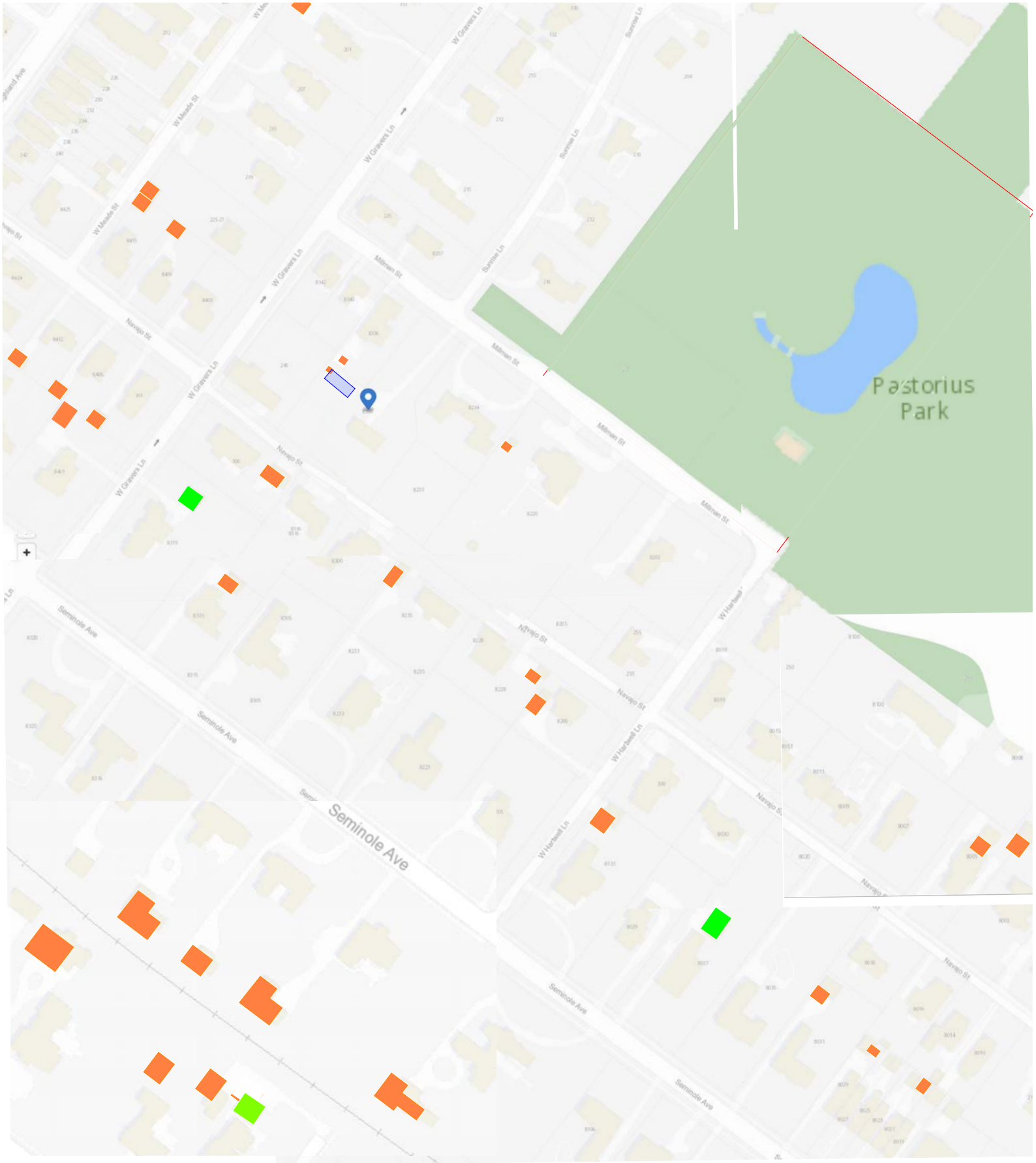


VANNA VENTURI HOUSE: ACCESSORY DWELLING UNIT

THE GARDEN PAVILION

NAVAJO LOCATION ADU - Accessory Structures

ACCESSORY STRUCTURES IN SURROUNDING RSD 3 ZONE

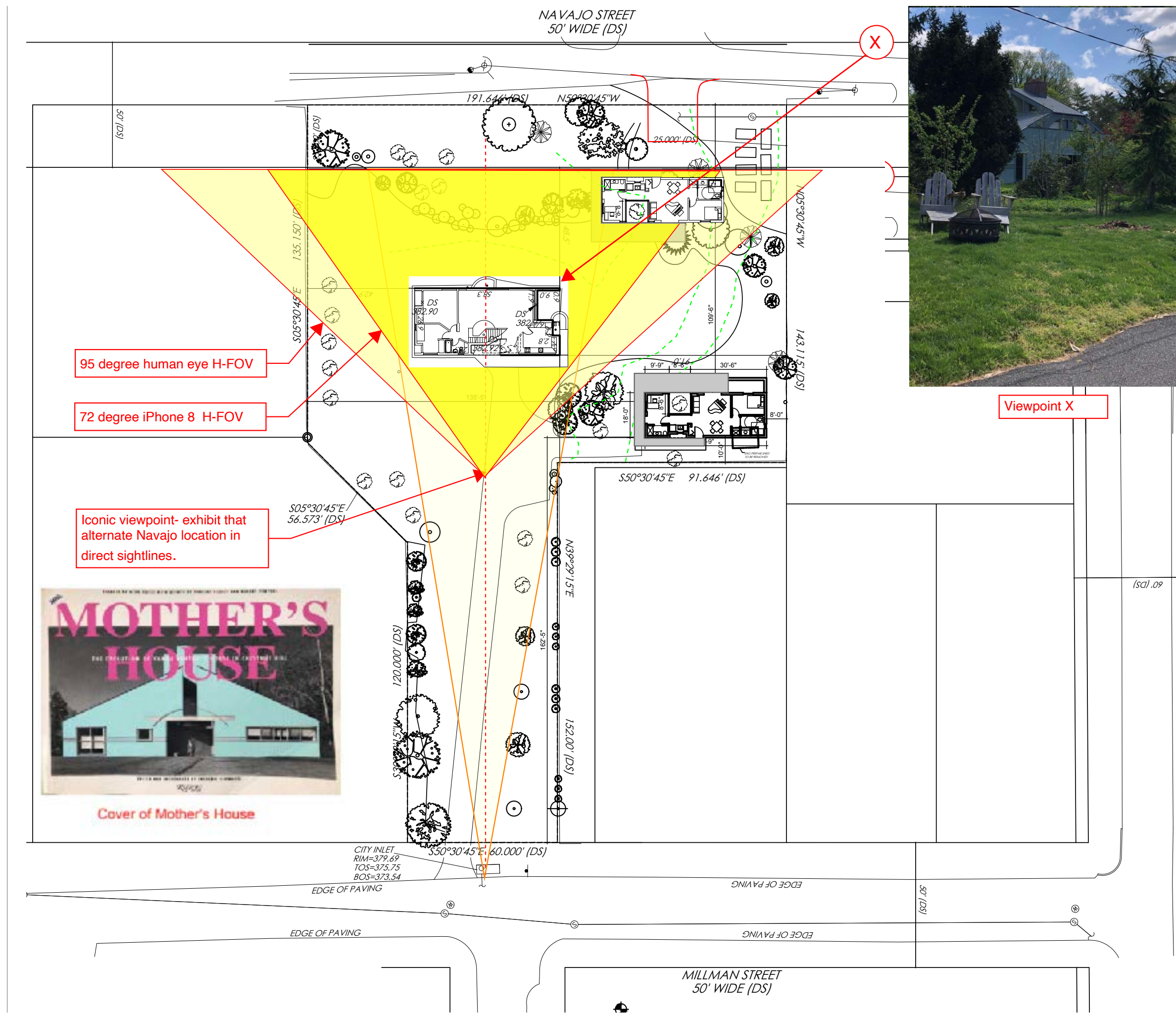


KEY	
	NON-CONFORMING
	CONFORMING

VANNA VENTURI HOUSE: ACCESSORY DWELLING UNIT

THE GARDEN PAVILION

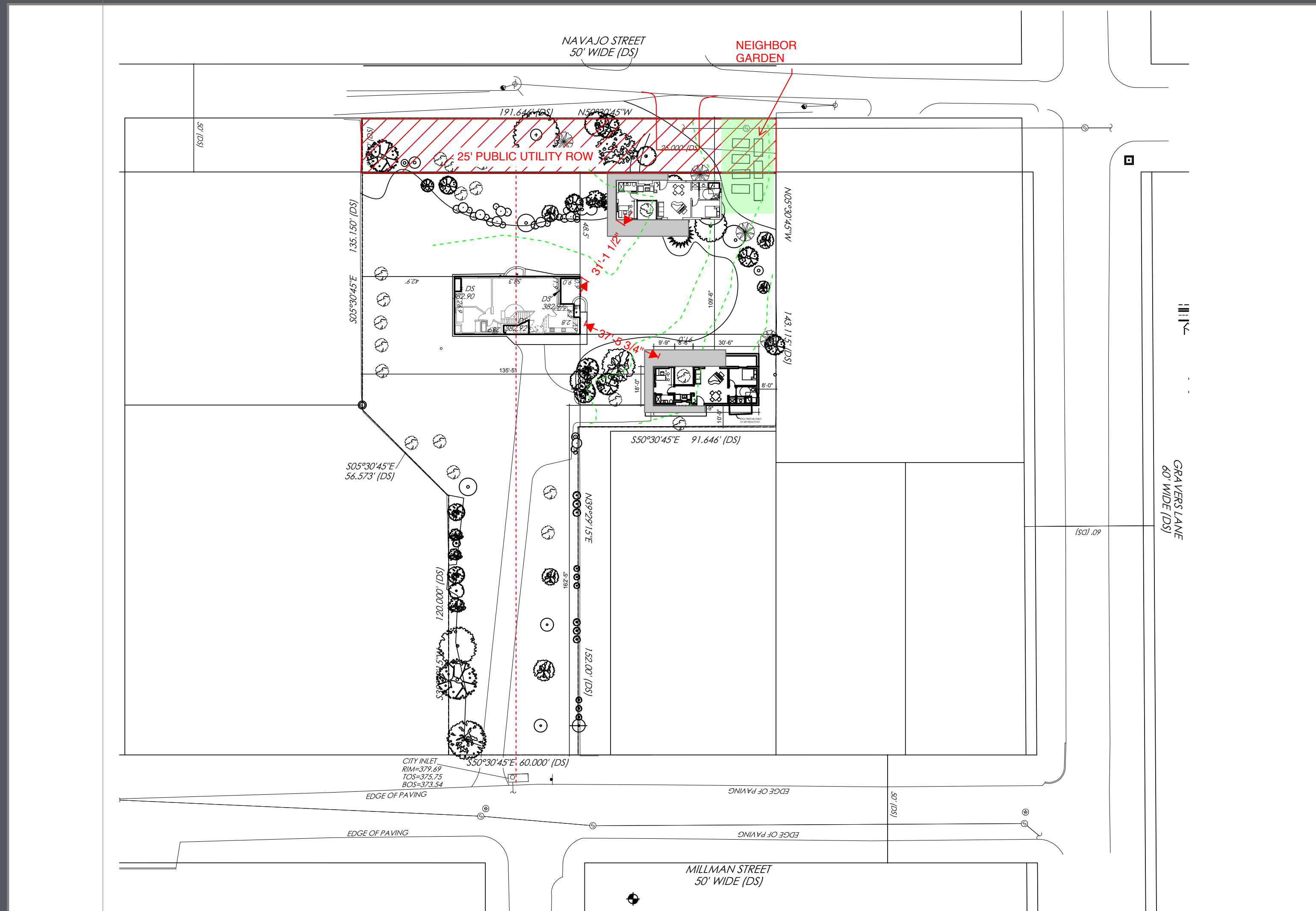
NAVAJO LOCATION ADU - Affected Views



VANNA VENTURI HOUSE: ACCESSORY DWELLING UNIT

THE GARDEN PAVILION

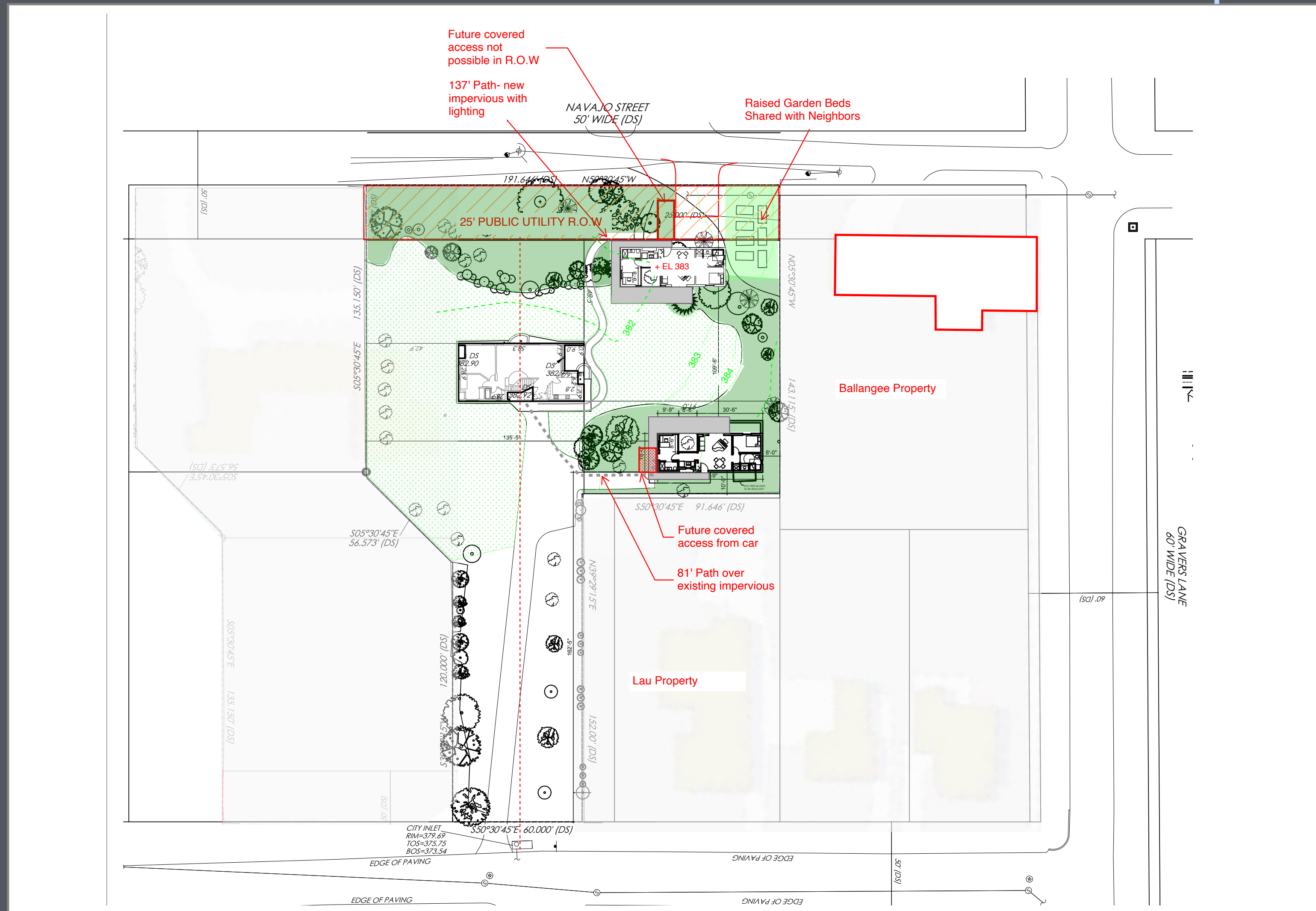
NAVAJO LOCATION ADU - Affected Dimensions



VANNA VENTURI HOUSE: ACCESSORY DWELLING UNIT

THE GARDEN PAVILION

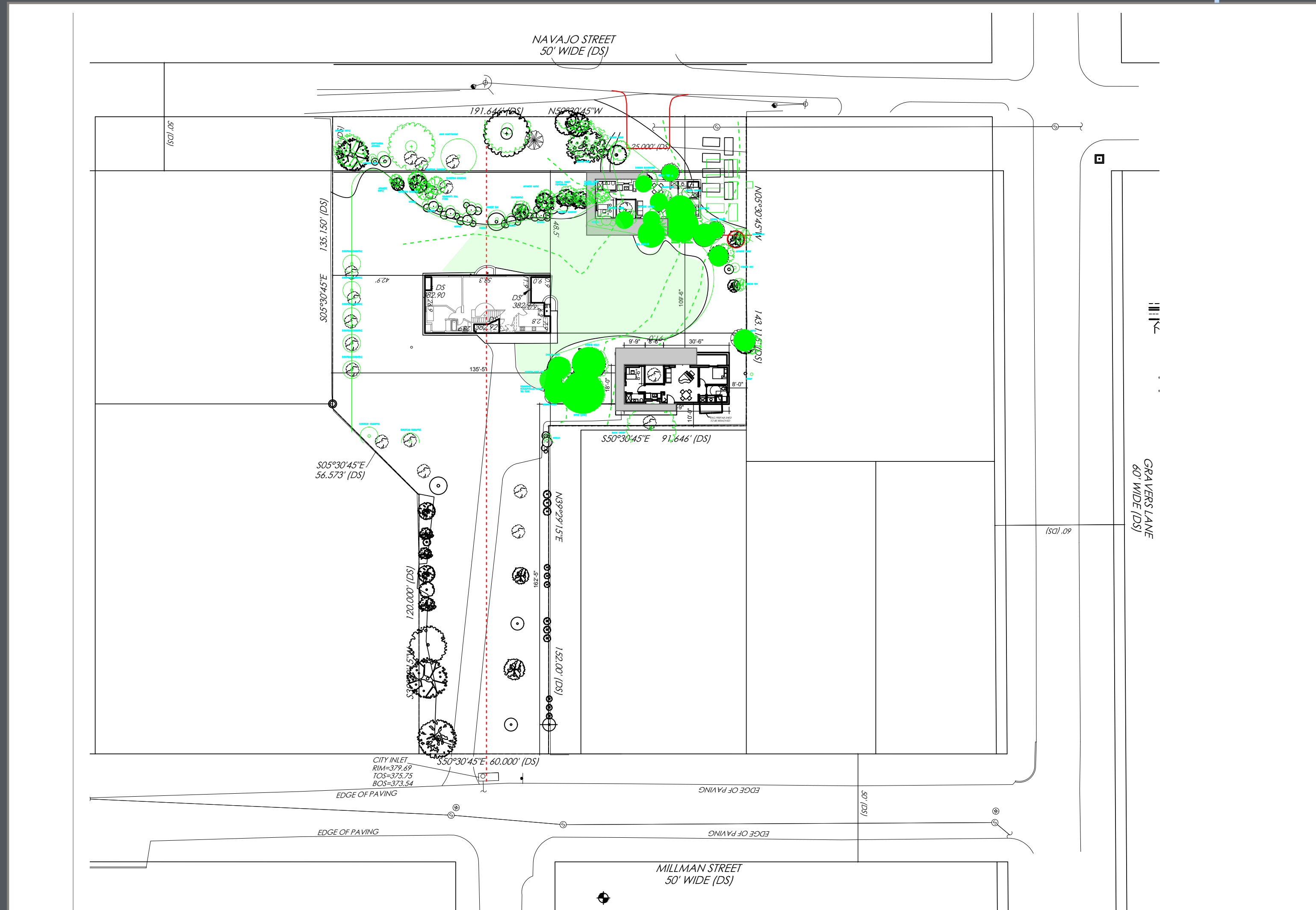
NAVAJO LOCATION ADU - Affected Landscape/ADA



VANNA VENTURI HOUSE: ACCESSORY DWELLING UNIT

THE GARDEN PAVILION

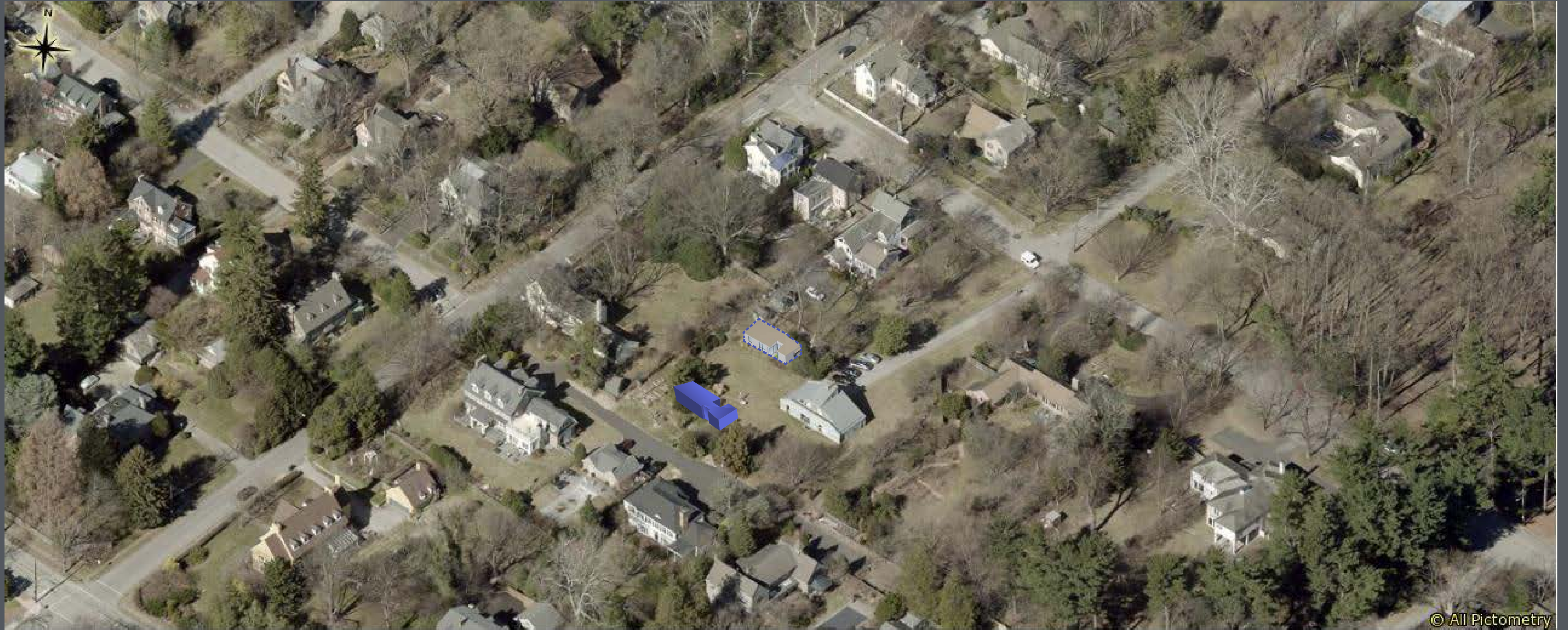
NAVAJO LOCATION ADU - Affected Landscape



VANNA VENTURI HOUSE: ACCESSORY DWELLING UNIT

THE GARDEN PAVILION

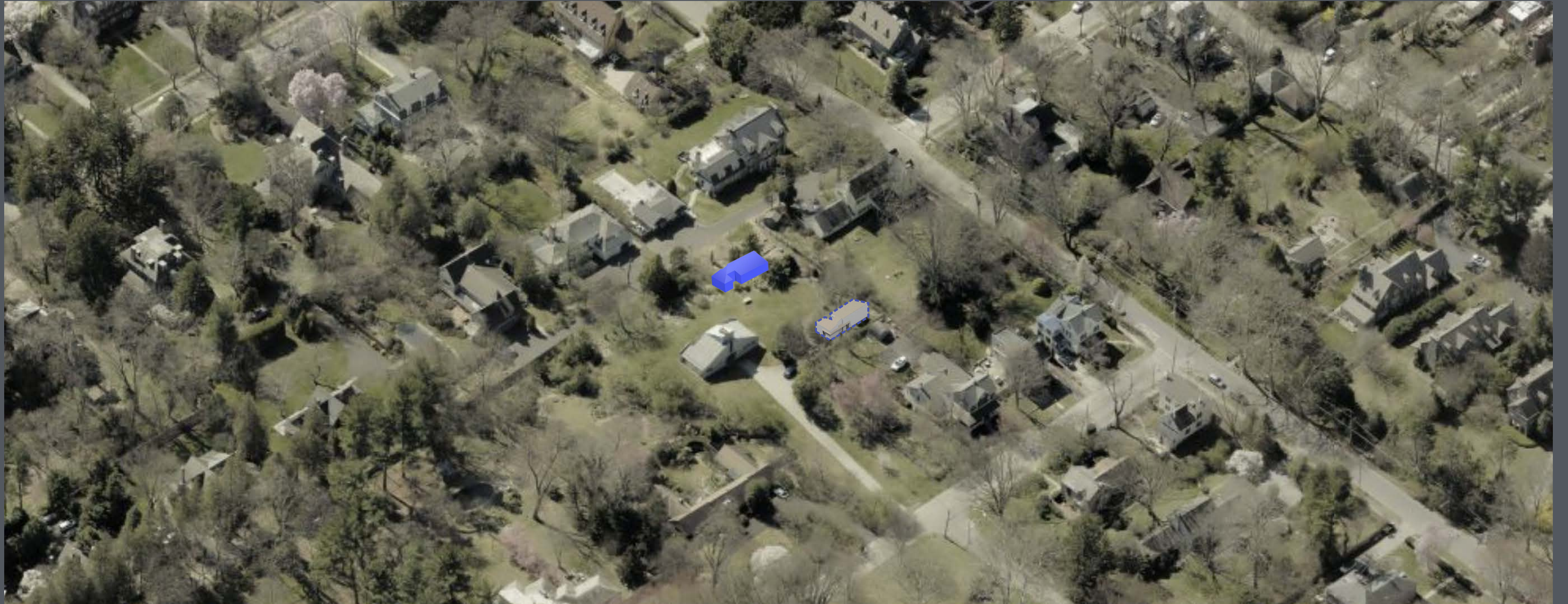
NAVAJO LOCATION ADU - Aerial View 1



VANNA VENTURI HOUSE: ACCESSORY DWELLING UNIT

THE GARDEN PAVILION

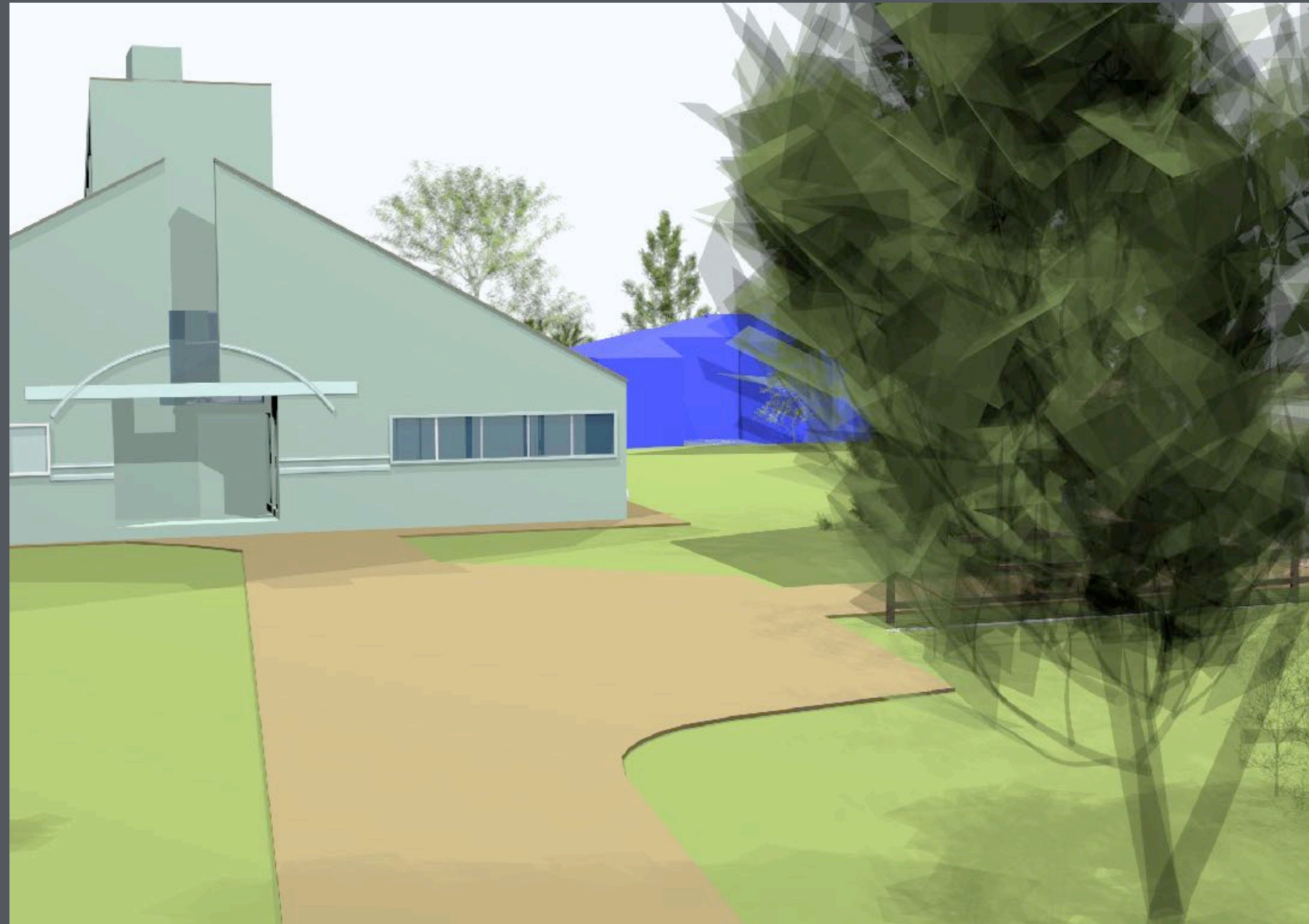
NAVAJO LOCATION ADU - Aerial View 2



VANNA VENTURI HOUSE: ACCESSORY DWELLING UNIT

THE GARDEN PAVILION

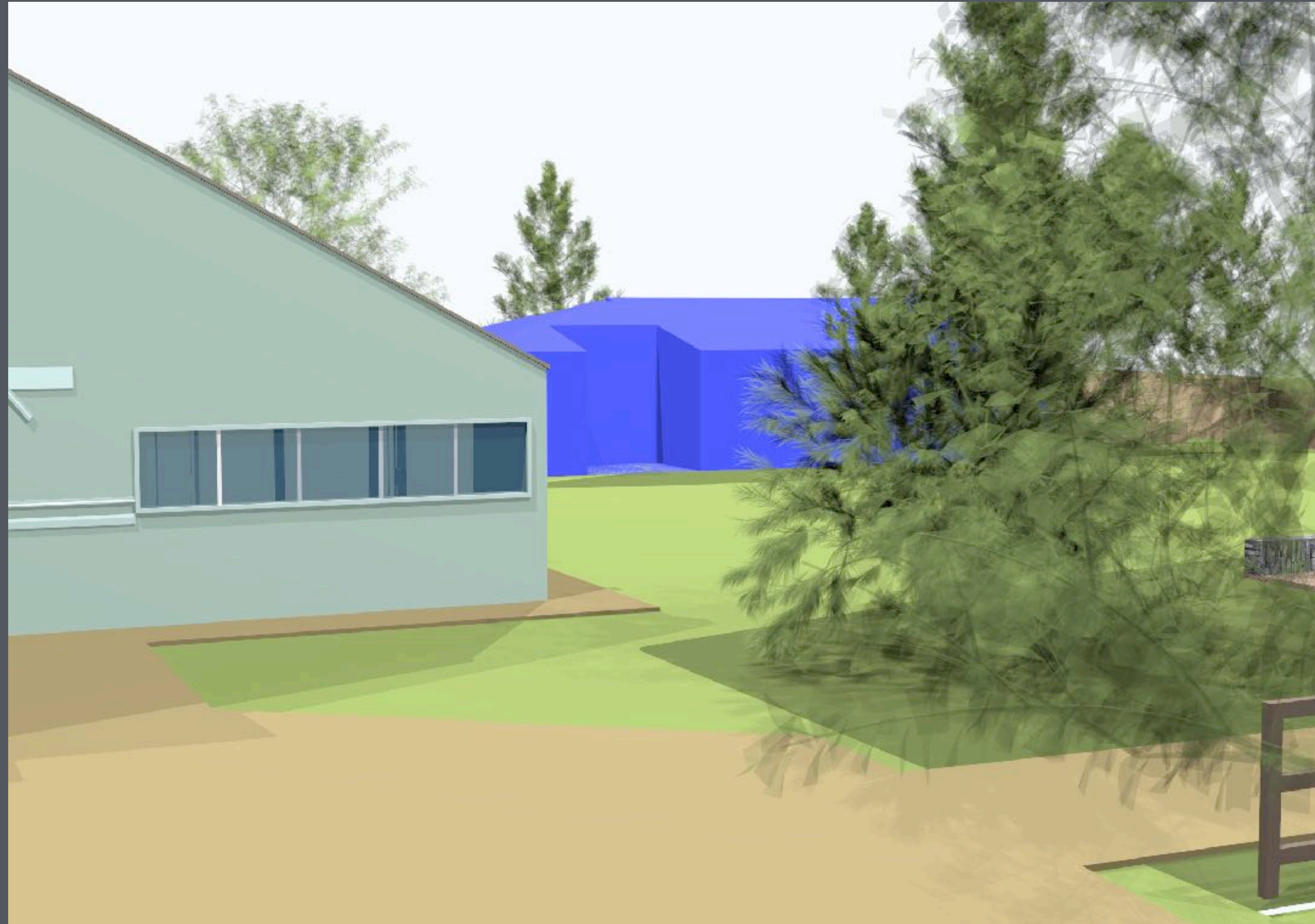
NAVAJO LOCATION ADU - Ground View 1



VANNA VENTURI HOUSE: ACCESSORY DWELLING UNIT

THE GARDEN PAVILION

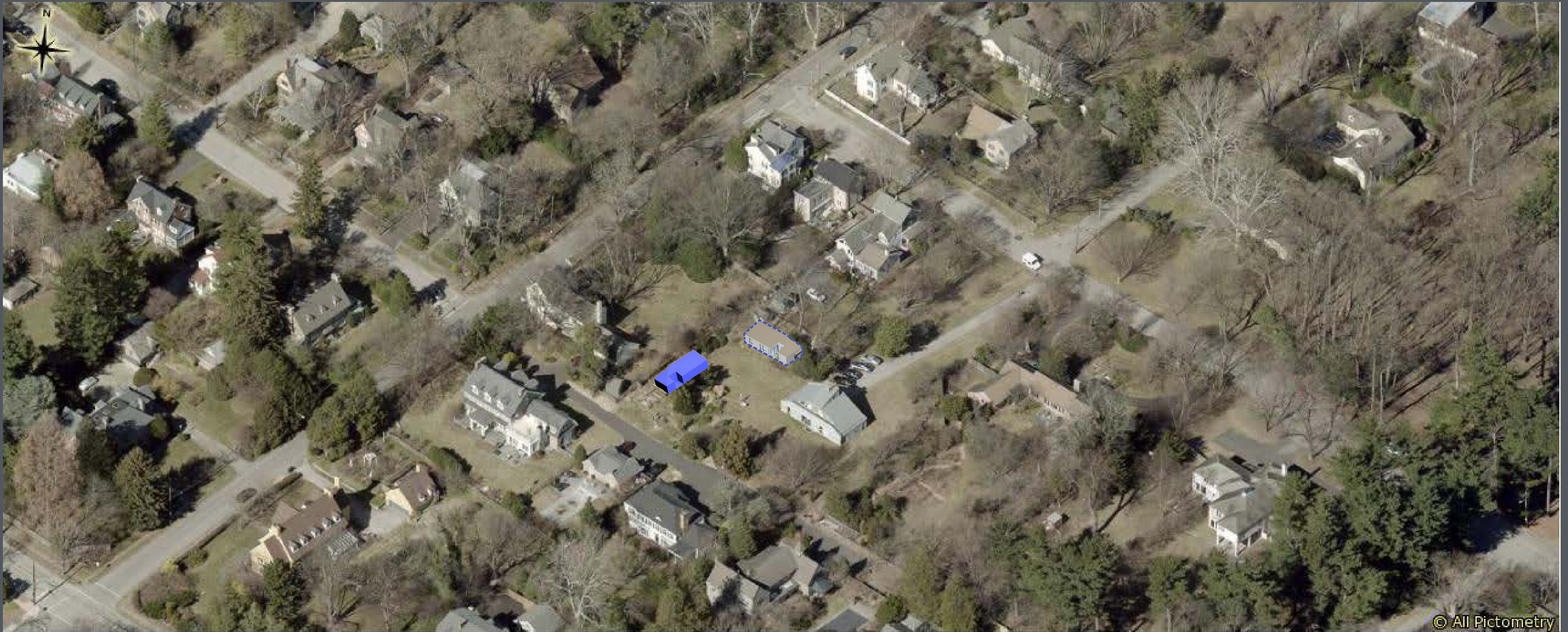
NAVAJO LOCATION ADU - Ground View 2



VANNA VENTURI HOUSE: ACCESSORY DWELLING UNIT

THE GARDEN PAVILION

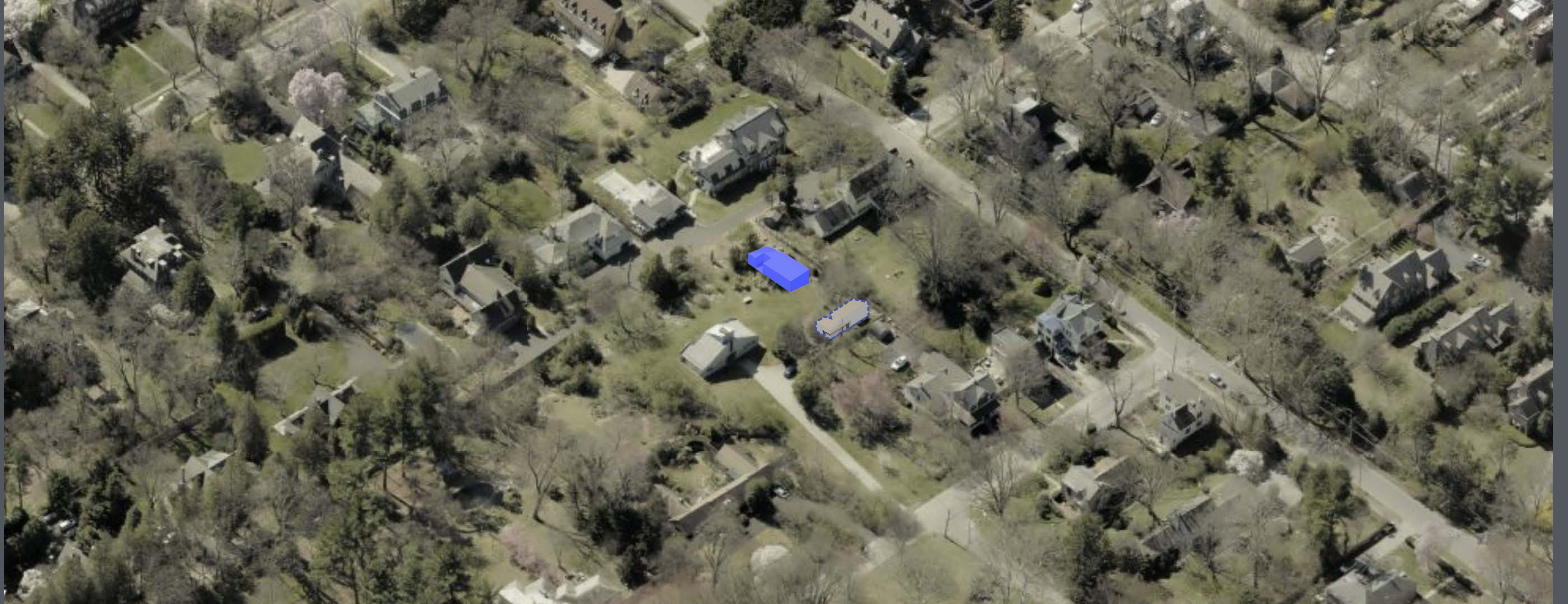
BALLANGEE LOCATION ADU - Aerial View 1



VANNA VENTURI HOUSE: ACCESSORY DWELLING UNIT

THE GARDEN PAVILION

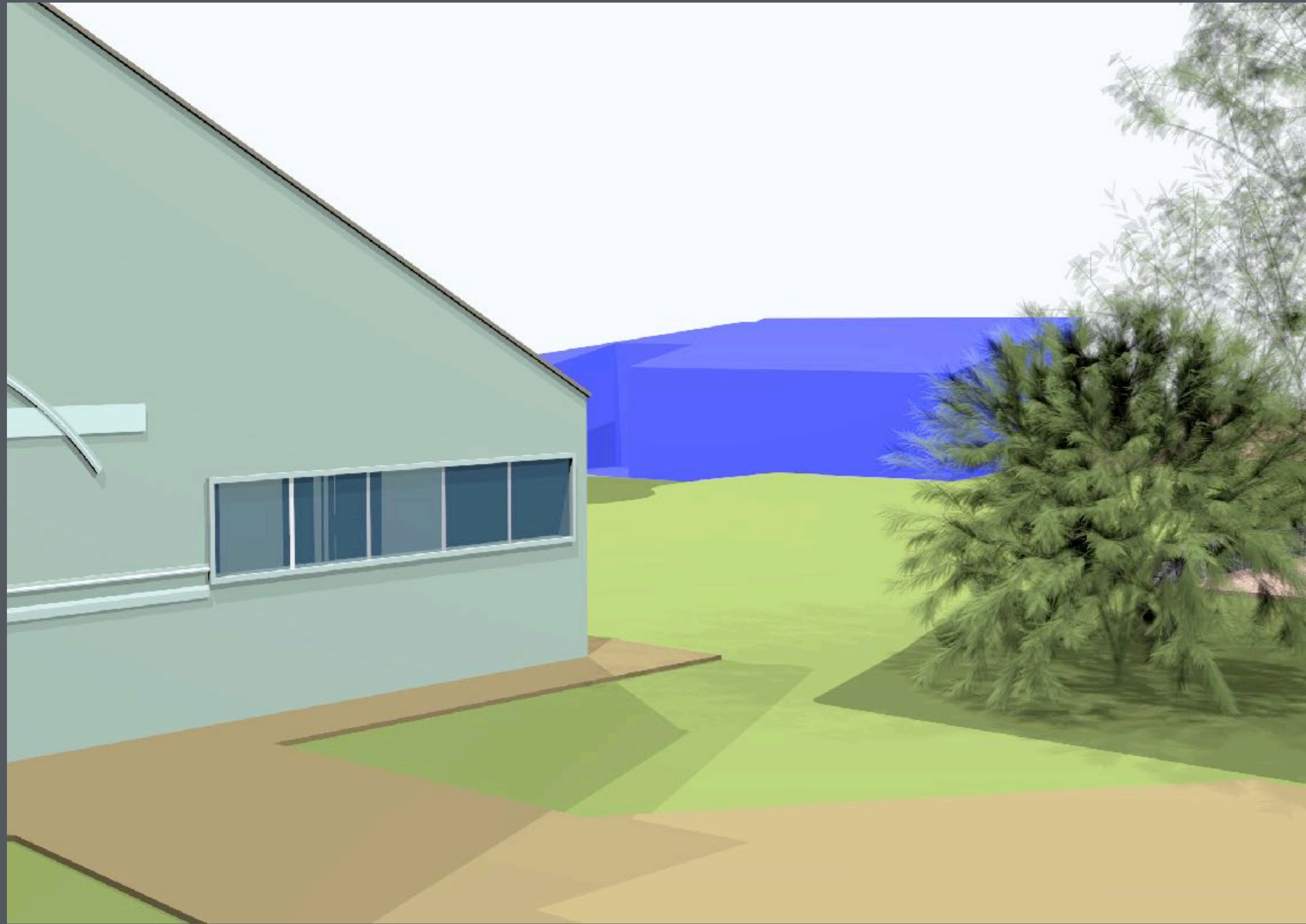
BALLANGEE LOCATION ADU - Aerial View 2



VANNA VENTURI HOUSE: ACCESSORY DWELLING UNIT

THE GARDEN PAVILION

BALLANGEE LOCATION ADU - Ground View



VANNA VENTURI HOUSE: ACCESSORY DWELLING UNIT

THE GARDEN PAVILION