

SPRINGSIDE CHESTNUT HILL ACADEMY

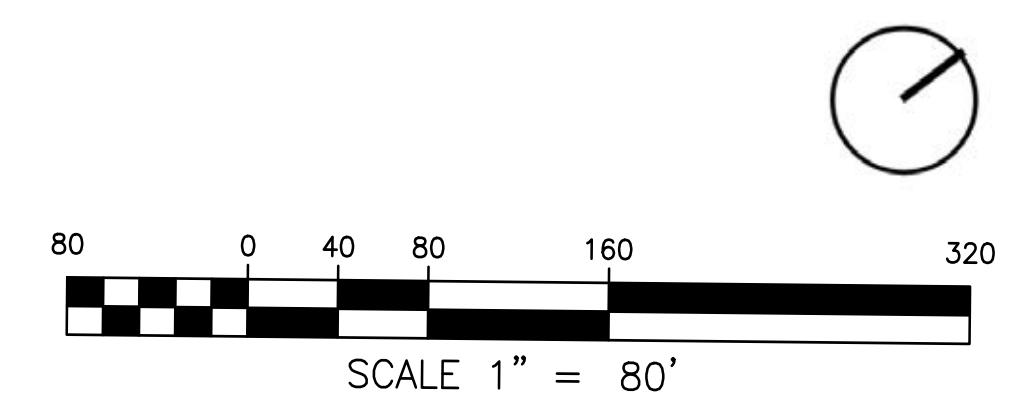
PERFORMING ARTS CENTER - RENOVATION & ADDITION

SPRINGSIDE CHESTNUT HILL ACADEMY: PERFORMING ARTS CENTER



CAMPUS LEGEND

- 1 PERFORMING ARTS CENTER
- 2 ATHLETIC COMPLEX
- 3 EARLY CHILDHOOD CENTER
- 4 WISSAHICKON INN/UPPER SCHOOL
- 5 SCIENCE BUILDING
- 6 FIELD
- 7 MIDDLE SCHOOL



EXISTING PARCEL PLAN

SPRINGSIDE CHESTNUT HILL ACADEMY: PERFORMING ARTS CENTER



SPRINGSIDE CHESTNUT HILL ACADEMY: PERFORMING ARTS CENTER



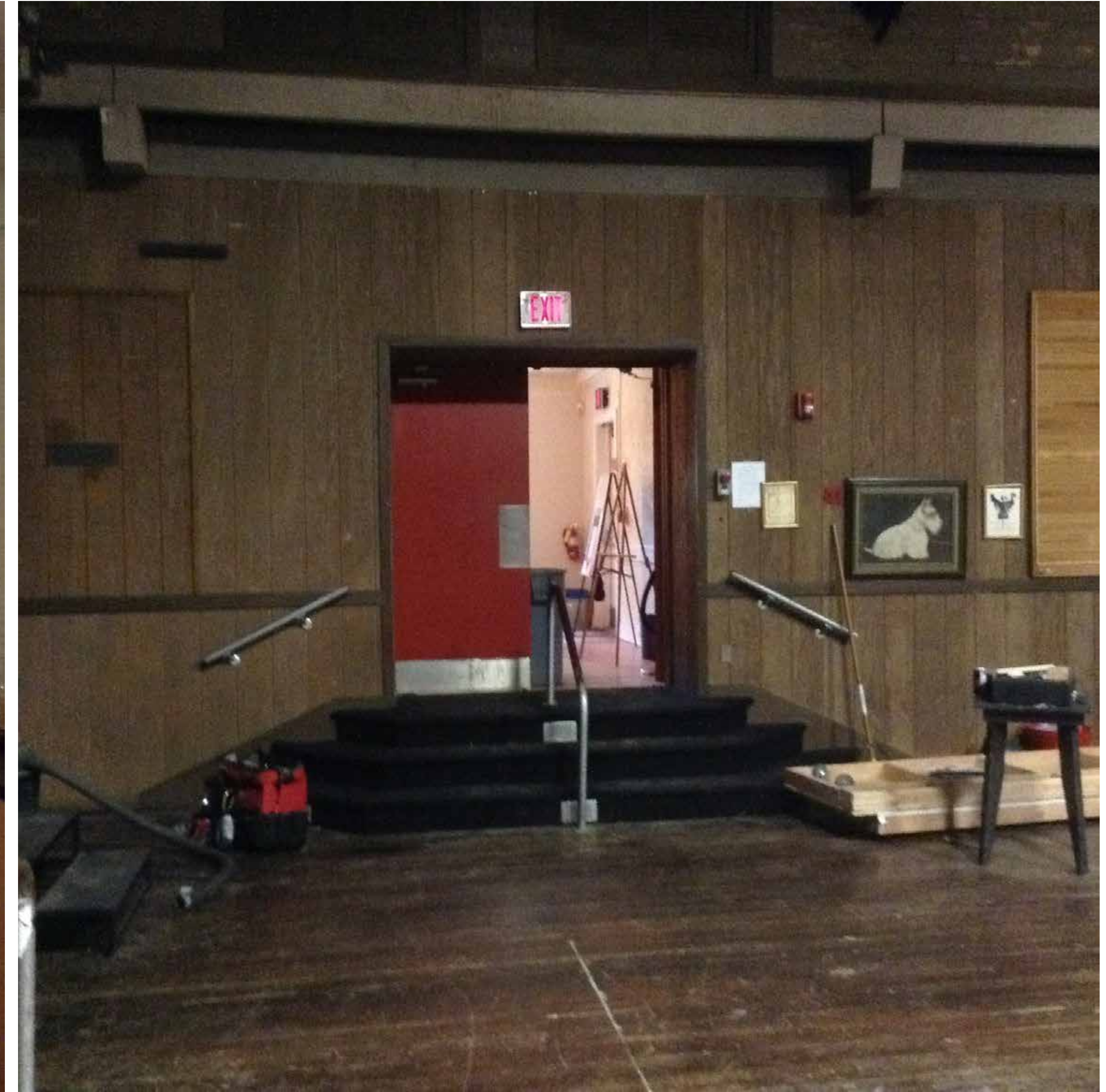
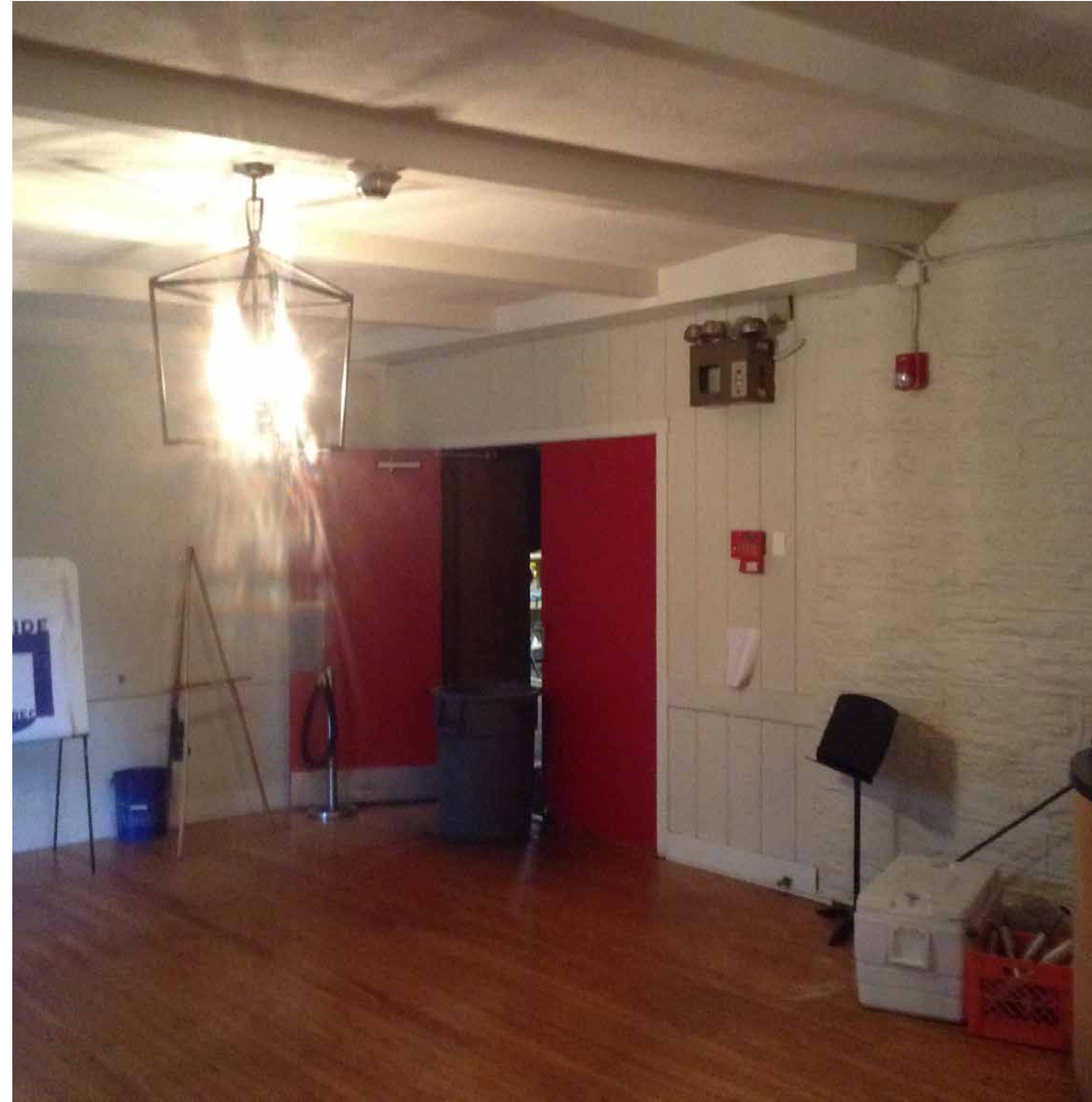
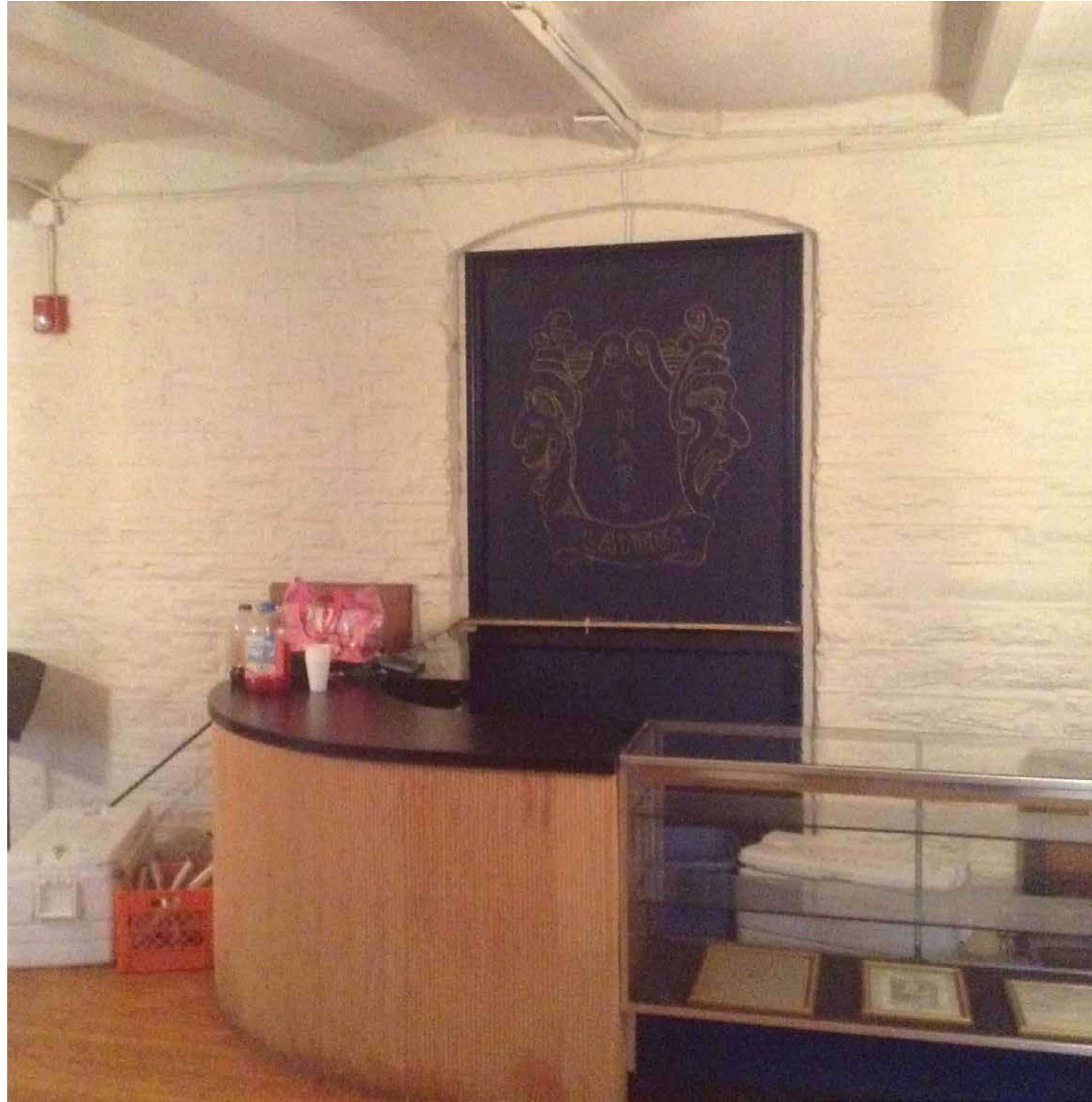
SPRINGSIDE CHESTNUT HILL ACADEMY: PERFORMING ARTS CENTER



SPRINGSIDE CHESTNUT HILL ACADEMY: PERFORMING ARTS CENTER



SPRINGSIDE CHESTNUT HILL ACADEMY: PERFORMING ARTS CENTER



SPRINGSIDE CHESTNUT HILL ACADEMY: PERFORMING ARTS CENTER

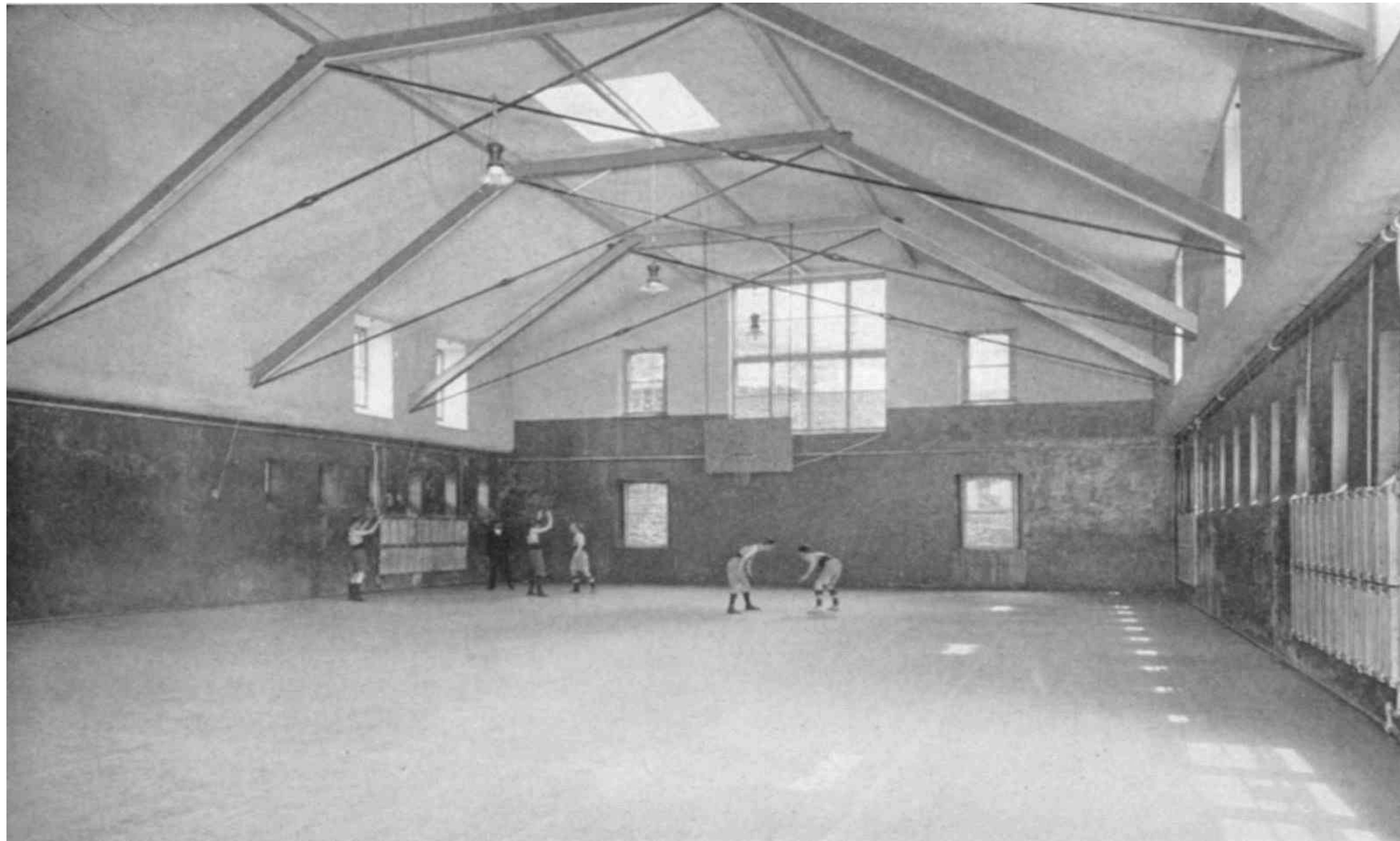


SPRINGSIDE CHESTNUT HILL ACADEMY: PERFORMING ARTS CENTER



Restore the Rec
plans call for the
restoration of the
windows.

SPRINGSIDE CHESTNUT HILL ACADEMY: PERFORMING ARTS CENTER

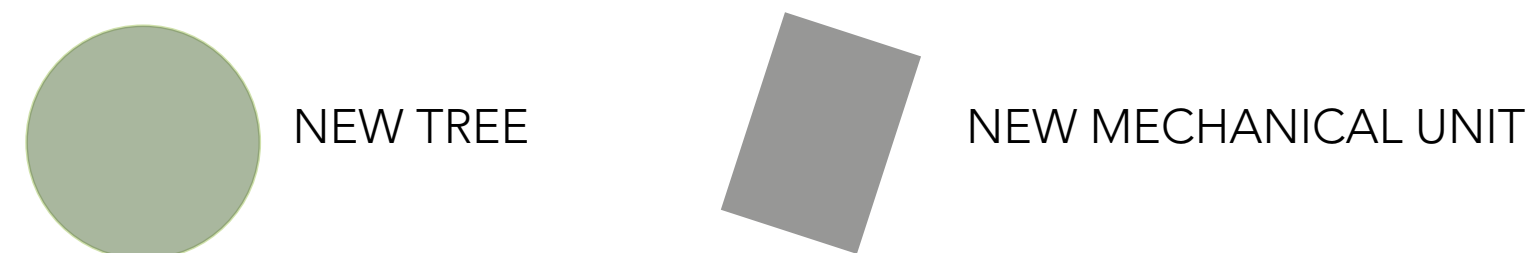
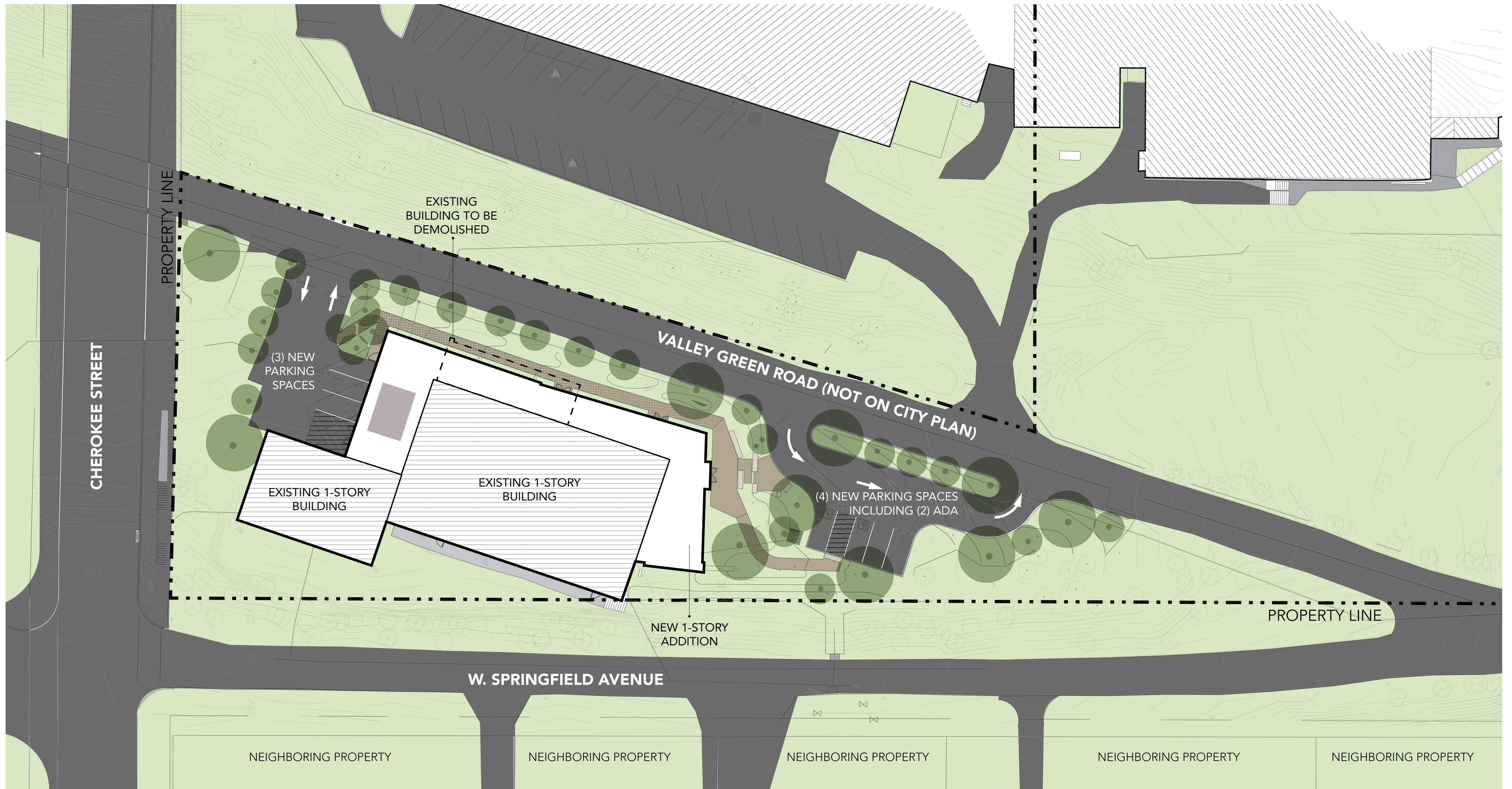


1914

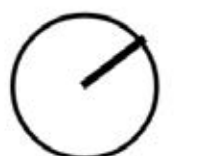
HISTORIC PHOTOS



SPRINGSIDE CHESTNUT HILL ACADEMY: PERFORMING ARTS CENTER



SCALE 1" = 20'



PROPOSED SITE PLAN



SPRINGSIDE CHESTNUT HILL ACADEMY: PERFORMING ARTS CENTER

LOT DATA:
TOTAL LOT AREA: 719,282 SF (16.512 ACRES)

*403 W SPRINGFIELD AVENUE LOT INFORMATION TAKEN FROM
PROPERTY.PHILA.GOV

EXISTING IMPERVIOUS COVERAGE WITHIN PROJECT AREA:

BUILDING	10,206	SF
WALLS	49	SF
ASPHALT	6,282	SF
WALKS & PADS	614	SF
ACCESS ROADWAY	3,305	SF
TOTAL	20,456	SF

EXISTING IMPERVIOUS COVERAGE TO BE REMOVED:

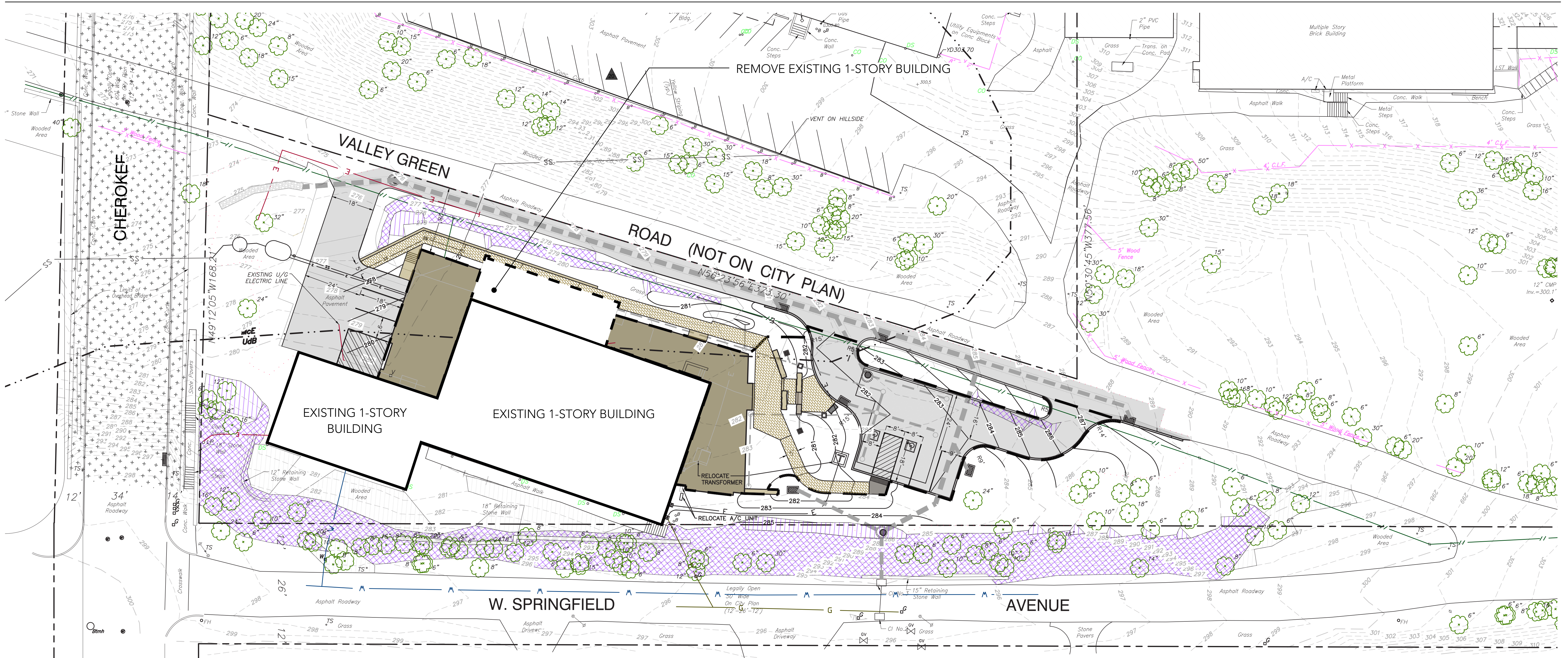
BUILDING	320	SF
WALLS	14	SF
ASPHALT	3,862	SF
WALKS & PADS	65	SF
ACCESS ROADWAY	124	SF
TOTAL	4,385	SF

IMPERVIOUS COVERAGE TO BE ADDED:

BUILDING	3,337	SF
WALLS	209	SF
ASPHALT	3,584	SF
WALKS & PADS	206	SF
ACCESS ROADWAY	108	SF
TOTAL	7,444	SF

PROPOSED IMPERVIOUS COVERAGE WITHIN PROJECT AREA:

BUILDING	13,223	SF
WALLS	244	SF
ASPHALT	6,004	SF
WALKS & PADS	755	SF
ACCESS ROADWAY	3,289	SF
TOTAL	23,515	SF
POROUS WALKWAYS	1,722	SF



PROPOSED MATERIALS LEGEND

- PROPOSED ASPHALT
- PROPOSED CONCRETE PATH/WALL
- BUILDING
- POROUS PAVEMENT/PAVERS

NEIGHBORING PROPERTY NEIGHBORING PROPERTY NEIGHBORING PROPERTY NEIGHBORING PROPERTY NEIGHBORING PROPERTY

SCALE 1" = 20'

PROPOSED SITE PLAN



SPRINGSIDE CHESTNUT HILL ACADEMY: PERFORMING ARTS CENTER

PLANTING REQUIREMENTS:

SECTION 14-705(1)(g):

TREE REPLACEMENT SCHEDULE

24-INCHES IN DBH CALIPER OF HEALTHY NON-INVASIVE TREES TO BE REMOVED

10 2.5-INCH CALIPER REPLACEMENT TREES REQUIRED

10 2.5-INCH CALIPER REPLACEMENT TREES PROVIDED

SECTION 14-803(5)e

(.1) INTERIOR PARKING LOTS AND OFF-STREET LOADING AREAS SHALL PROVIDE AN INTERIOR LANDSCAPED AREA CALCULATED AS A MINIMUM OF TEN PERCENT (10%) OF THE TOTAL AREA OF ALL PARKING SPACES, LOADING SPACES, DRIVEWAYS THAT PROVIDE ACCESS TO PARKING SPACES AND LOADING SPACES, AND DRIVE AISLES.

SECTION 14-803(5)e REQUIRES ONE SHADE TREE PER 200 SF, THREE SHRUBS PER 200 SF, AND 15 PERENIALS OR GROUND COVER PER 200 SF OF INTERIOR LANDSCAPED AREA.

EAST PARKING AREA (3,550-SF*0.10)

	REQUIRED	PROVIDED
1 SHADE TREE / 200 SF	355/200 = 1.75 (2)	2 (MIN.)
3 SHRUBS / 200 SF	355/200 = 5.25 (5)	6 (MIN.)
15 PERENIALS / 200 SF	355/200 = 26.63 (27)	27 (MIN.)

WEST PARKING AREA (2,705-SF*0.10)

	REQUIRED	PROVIDED
1 SHADE TREE / 200 SF	271/200 = 1.35 (2)	2 (MIN.)
3 SHRUBS / 200 SF	271/200 = 4.07 (4)	4 (MIN.)
15 PERENIALS / 200 SF	271/200 = 20.33 (20)	20 (MIN.)

TOTAL PLANTING REQUIREMENTS:

	REQUIRED	PROVIDED
SHADE TREES	21	21 (MIN.)
SHRUBS	60	60 (MIN.)
PERENIALS	47	47 (MIN.)

SECTION 14-803(5)d

(a) Along all street frontages, the applicant shall provide a minimum 5-foot wide buffer. Such buffer shall consist of at least one shade tree per 20 linear feet and four shrubs per 20 linear feet.

(2) For parcels 50,000 sq. ft. in size or greater, along primary frontages, the buffer provided pursuant to (.1) shall be at least 10 feet wide and shall include a minimum 3-foot high fence, wall, or berm and that meets all the conditions of (.1)(a), above.

EAST PARKING AREA (150 LF LANDSCAPE BUFFER)

	REQUIRED	PROVIDED
1 SHADE TREE / 20 LF	150/20 = 7.5 (8)	8 (MIN.)
4 SHRUBS / 20 SF	150/20 = 30 (30)	30 (MIN.)

WEST PARKING AREA (60 LF LANDSCAPE BUFFER)

	REQUIRED	PROVIDED
1 SHADE TREE / 20 LF	70/20 = 3.5 (4)	4 (MIN.)
4 SHRUBS / 20 SF	70/20 = 14 (14)	14 (MIN.)

NOTES:

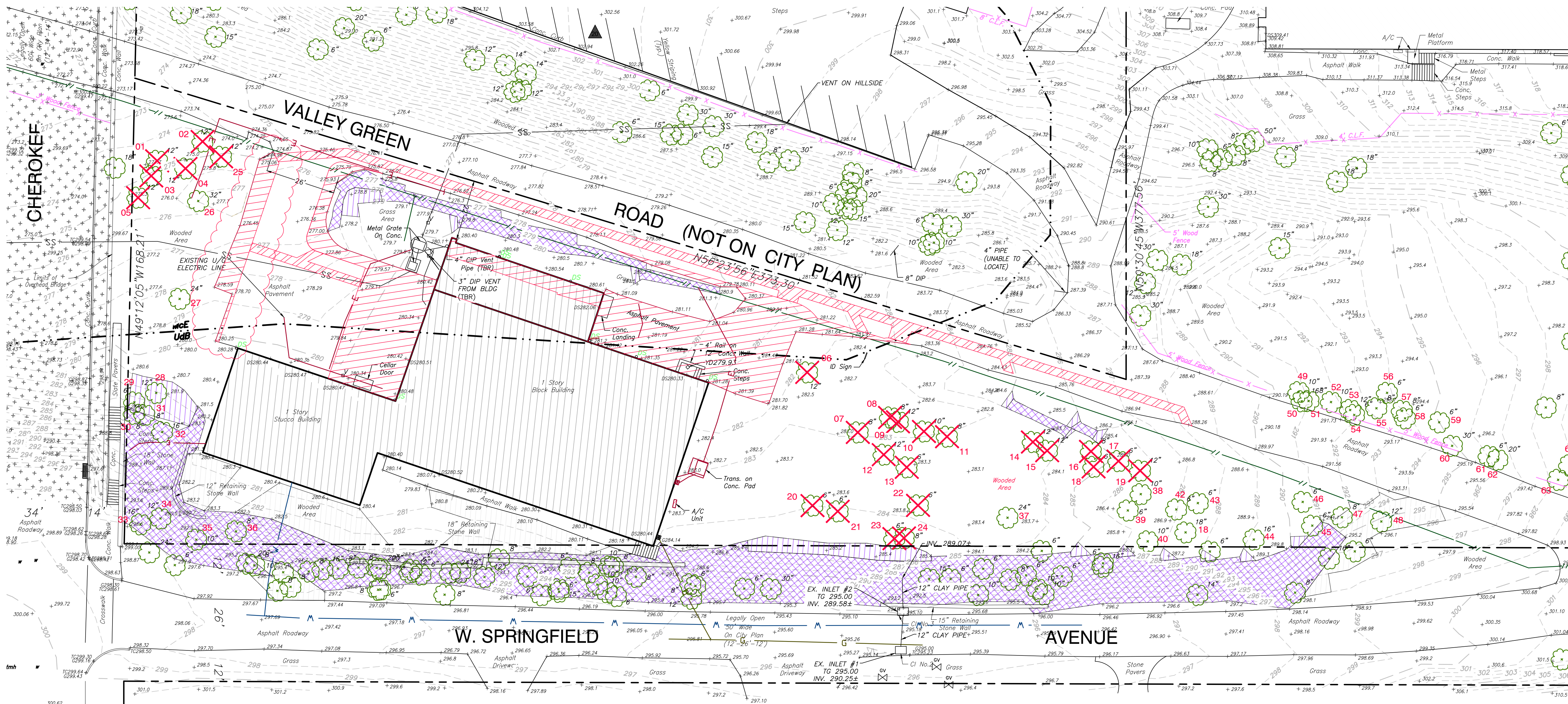
- NO CREDIT IS TAKEN FOR EXISTING SITE TREES TO REMAIN.
- THE PROPOSED WORK IS TO COMPLY WITH THE ABOVE MENTIONED CODE SECTIONS.

PROPOSED TREE REPLACEMENT CALCS AND PLANT LIST:

EXISTING TREE REMOVAL: 12 INCHES (SEE C-002)
TO BE REPLACED WITH INSTALLATION OF 5 PROPOSED TREES (MINIMUM 2.5 INCH CALIBER) = 12.5 INCHES MINIMUM

PROPOSED TREE NOTES:

- EVENLY DISPERSE PROPOSED TREES SPECIES, NOT BE GROUPED BY SPECIES.
- ALL PROPOSED TREES ARE TO BE A MIN. OF 2.5" CALIBER WHEN PLANTED OR 5 FEET TALL FOR EVERGREEN TREES.
- ALL PROPOSED TREES SPECIES ARE TO BE PICKED FROM THE PHILADELPHIA PLANNING COMMISSION'S PLANT LIST AS REQUIRED IN CODE SECTION 14-705(1)(c)(1).



Tree Report				
ID	DBH (inches)	NAME	NOTES	
1	12"	Ailanthus	(good condition)	invasive*
2	12"	Paulownia	(good condition)	invasive*
3	12"	Mulberry	(good condition)	invasive*
4	12"	Ailanthus	(good condition)	invasive*
5	12"	Paulownia	(good condition)	invasive*
6	12"	Hackberry	(leaning questionable)	
7	8"	Norway Maple	(poor condition damaged trunk)	invasive*
8	8"	Norway Maple	(poor condition)	invasive*
9	12"	Norway Maple	(damaged trunk)	invasive*
10	10"	Norway Maple	(good condition)	invasive*
11	8"	Norway Maple	(good condition)	invasive*
12	12"	Norway Maple	(good condition)	invasive*
13	6"	Norway Maple	(good condition)	invasive*
14	12"	Norway Maple	(good condition)	invasive*
15	12"	Norway Maple	(good condition)	invasive*
16	8"	Norway Maple	(good condition)	invasive*
17	6"	Norway Maple	(good condition)	invasive*
18	6"	Norway Maple	(good condition)	invasive*
19	12"	Norway Maple	(good condition)	invasive*
20	6"	Norway Maple	(good condition)	invasive*
21	6"	Norway Maple	(good condition)	invasive*
22	6"	Norway Maple	(good condition)	invasive*
23	6"	Norway Maple	(good condition)	invasive*
24	8"	Norway Maple	(good condition)	invasive*
25	12"	Paulownia	(good condition)	invasive*

Total of 12 inches are being removed to be replaced with five (5) 2.5 inch caliper trees

* Invasive species not get counted in tree replacement counts per zoning code section 14-705(1)(g)(2)

Trees to remain				
ID	DBH (inches)	NAME	NOTES	
26	32"	Paulownia	(specimen caliber good condition)	
27	24"	Walnut	(good condition)	
28	12"	Walnut	(good condition)	
29	6"	Walnut	(good condition)	
30	8"	Paulownia	(good condition)	
31	8"	Walnut	(good condition)	
32	16"	Paulownia	(good condition)	
33	16"	Paulownia	(good condition)	
34	12"	Walnut	(good condition)	
35	10"	Walnut	(good condition)	
36	8"	Walnut	(good condition)	
37	24"	Douglas Fir	(fair condition)	
38	10"	Norway Maple	(good condition)	
39	6"	Norway Maple	(good condition)	
40	10"	Norway Maple	(good condition)	
41	18"	Norway Maple	(good condition)	
42	6"	Norway Maple	(good condition)	
43	6"	Norway Maple	(good condition)	
44	16"	Norway Maple	(good condition)	
45	6"	Norway Maple	(good condition)	
46	6"	Norway Maple	(good condition)	
47	8"	Norway Maple	(good condition)	
48	12"	Norway Maple	(good condition)	
49	10"	Silver Maple	(good condition)	
50	16"	Silver Maple	(good condition)	
51	8"	Silver Maple	(good condition)	
52	10"	Black Locust	(good condition)	
53	12"	Black Locust	(good condition)	
54	6"	Silver Maple	(good condition)	
55	8"	Black Locust	(good condition)	
56	6"	Black Locust	(good condition)	
57	8"	Black Locust	(good condition)	
58	6"	Silver Maple	(good condition)	
59	6"	Silver Maple	(good condition)	
60	30"	Black Locust	(Specimen good condition)	
61	6"	Silver Maple	(good condition)	
62	20"	Black Locust	(good condition)	
63	20"	Black Locust	(good condition)	
64	10"	Black Locust	(good condition)	
65	12"	Silver Maple	(good condition)	
66	6"	Silver Maple	(good condition)	

SCALE 1" = 20'

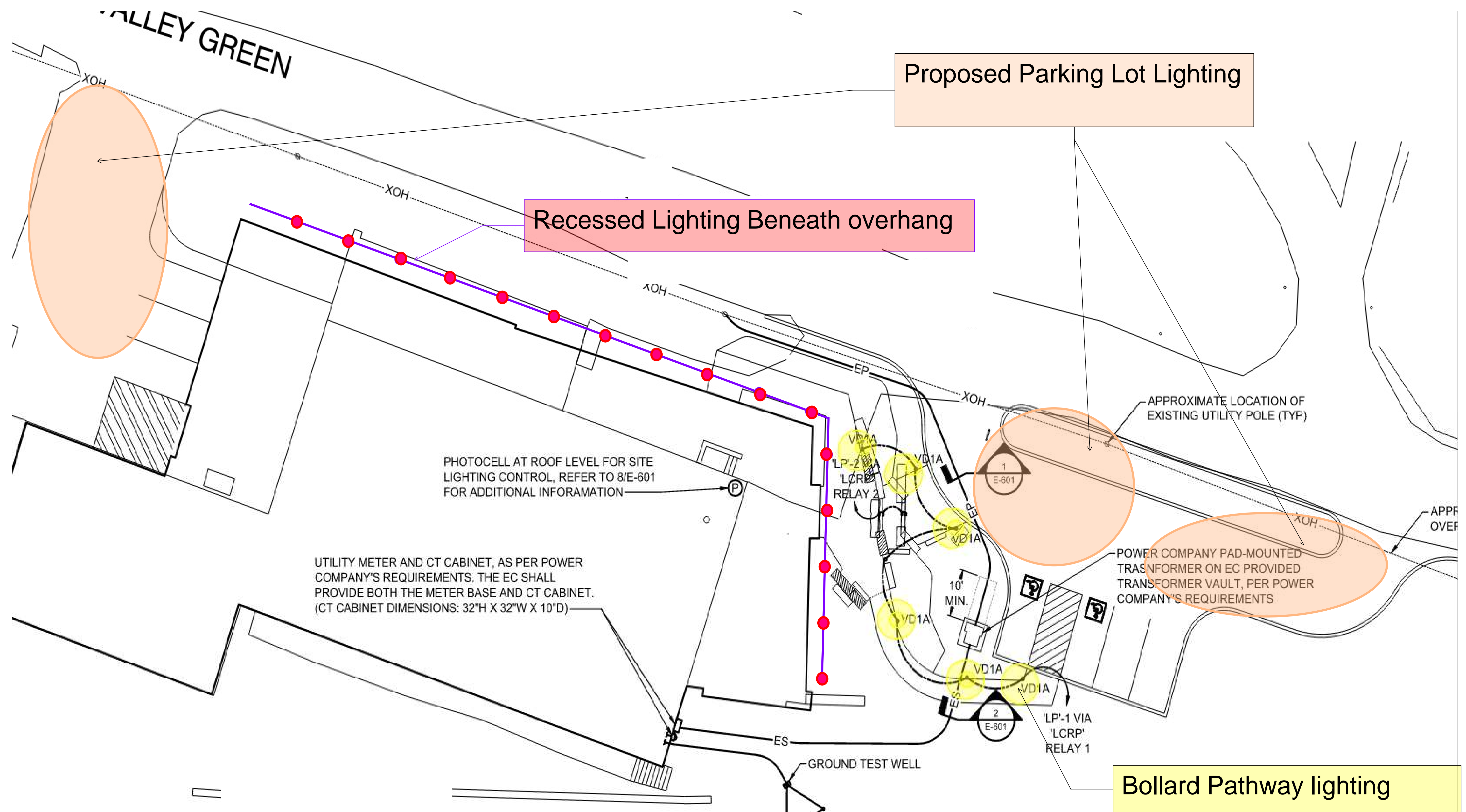


SPRINGSIDE CHESTNUT HILL ACADEMY: PERFORMING ARTS CENTER

SITE TREES				
Quantity	Symbol	Scientific Name	Common Name	Planting Size
33	AG	Amelanchier x grandiflora	Serviceberry	2-2.5' cal., 12-14' ht., 7-8' sp., B&B
SHRUBS				
Quantity	Symbol	Scientific Name	Common Name	Planting Size
12	COS	Cornus sericea	Red-osier dogwood	30'-36" ht., 30'-36" sp. cont.
10	HAV	Hamamelis virginiana	Witch-Hazel	30'-36" ht., 30'-36" sp. cont.
19	ILG	Ilex glabra	Inkberry Holly	30'-36" ht., 30'-36" sp. cont.
8	ILV	Ilex verticillata	Winterberry	30'-36" ht., 30'-36" sp. cont.
11	VID	Viburnum dentatum	Southern Arrow-Wood	30'-36" ht., 30'-36" sp. cont.



SPRINGSIDE CHESTNUT HILL ACADEMY: PERFORMING ARTS CENTER



SPRINGSIDE CHESTNUT HILL ACADEMY: PERFORMING ARTS CENTER



Sample of Bollard lighting at Night

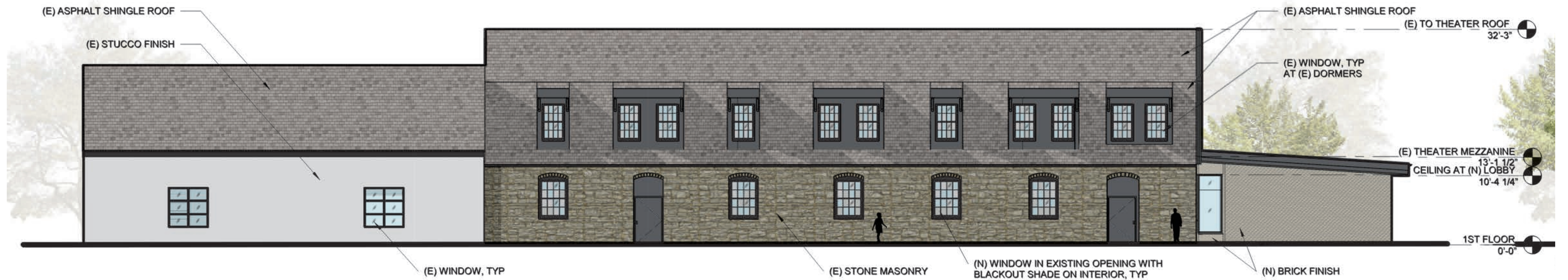


Proposed Parking Lot Pole Light

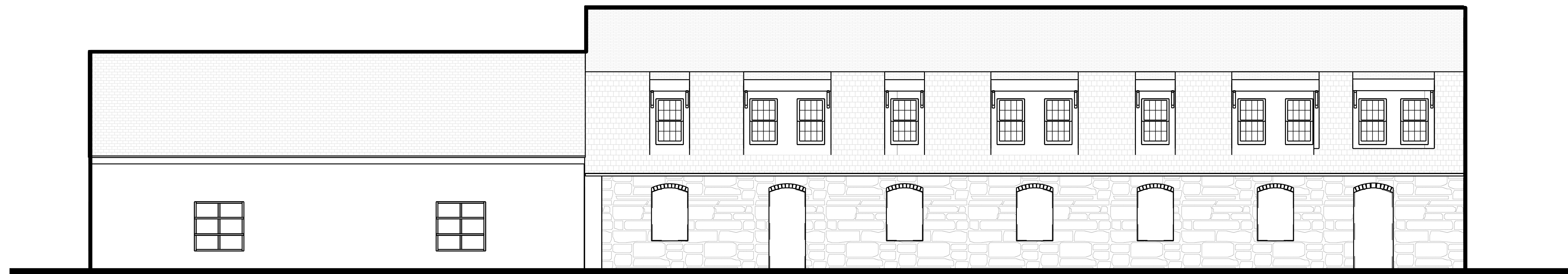


Recessed Lighting at overhang

SPRINGSIDE CHESTNUT HILL ACADEMY: PERFORMING ARTS CENTER



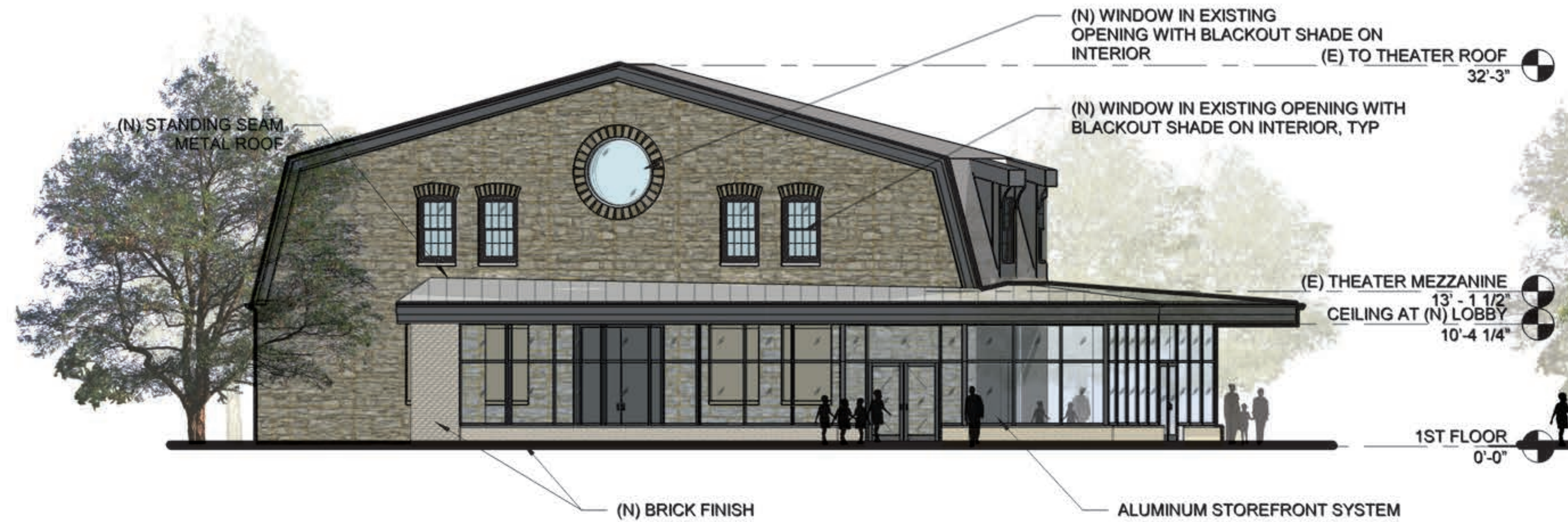
PROPOSED SOUTH ELEVATION



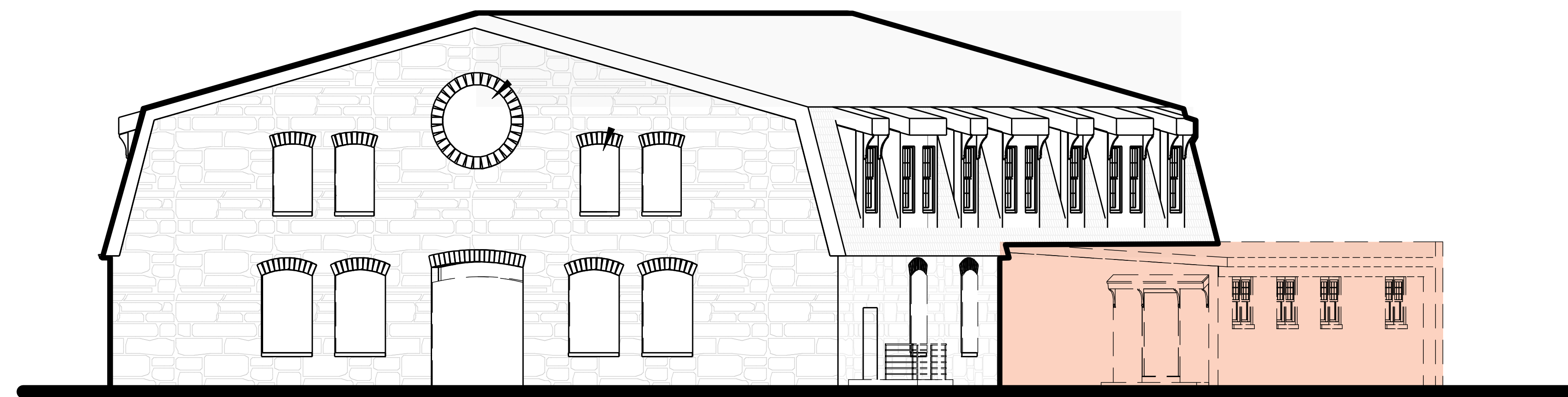
EXISTING SOUTH ELEVATION

ELEVATIONS

SPRINGSIDE CHESTNUT HILL ACADEMY: PERFORMING ARTS CENTER



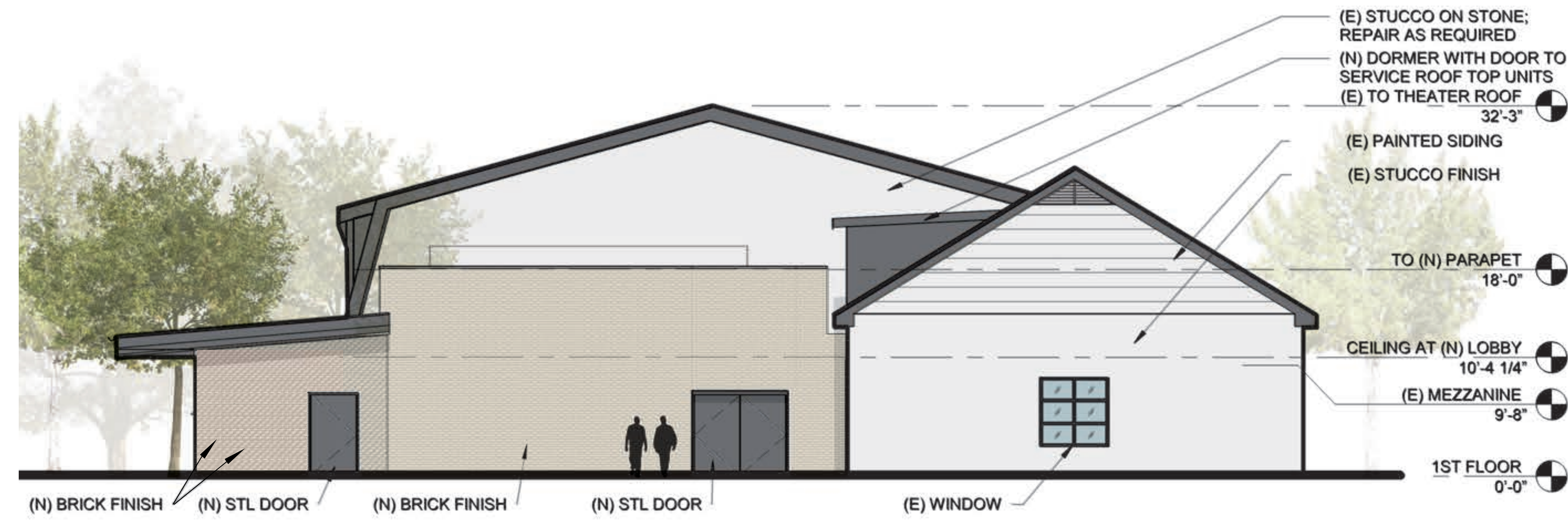
PROPOSED EAST ELEVATION



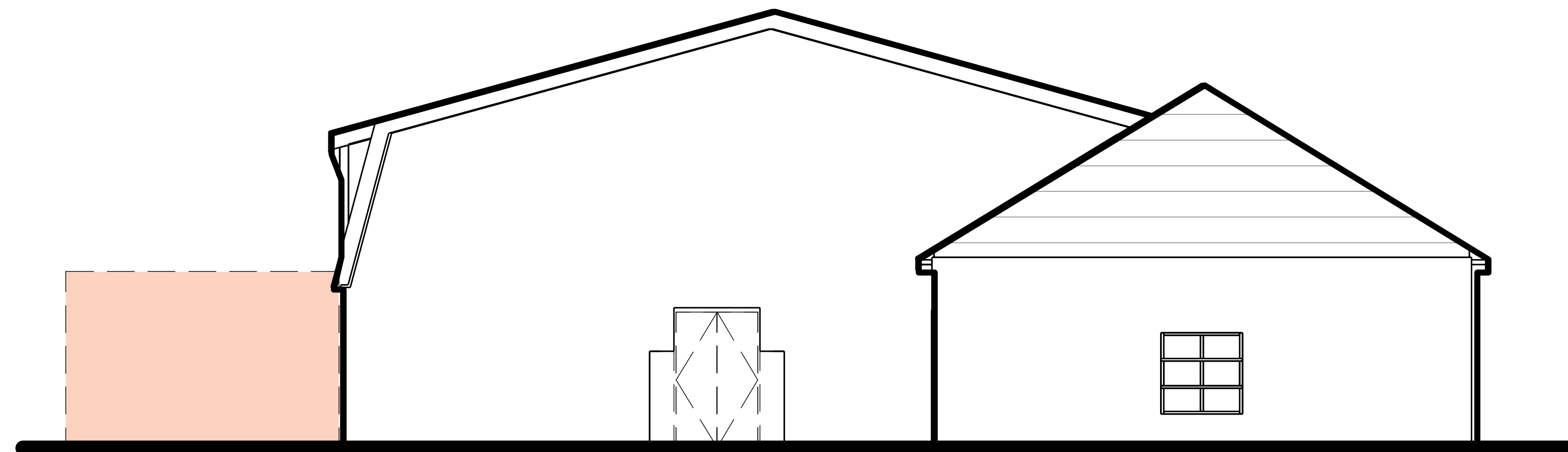
EXISTING EAST ELEVATION

ELEVATIONS

SPRINGSIDE CHESTNUT HILL ACADEMY: PERFORMING ARTS CENTER



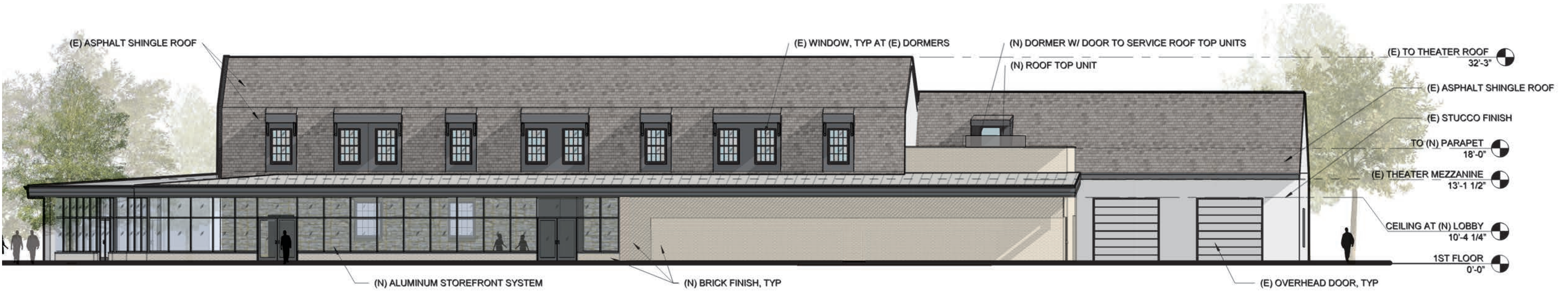
PROPOSED WEST ELEVATION



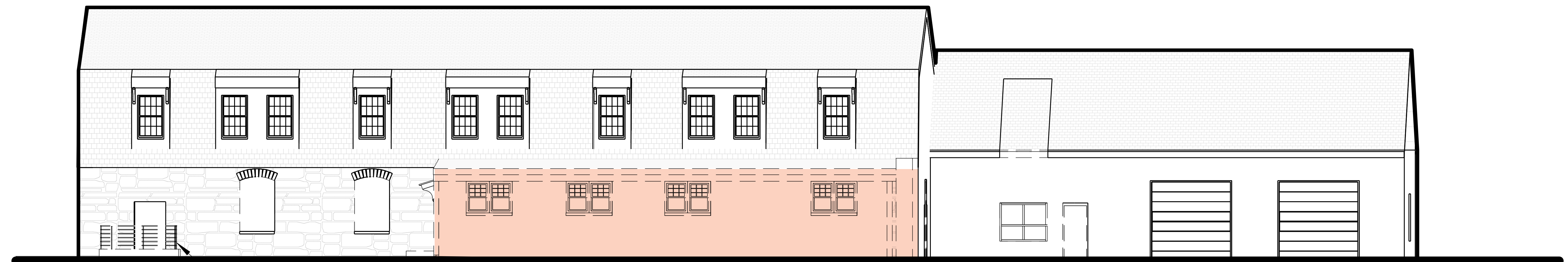
EXISTING WEST ELEVATION

ELEVATIONS

SPRINGSIDE CHESTNUT HILL ACADEMY: PERFORMING ARTS CENTER



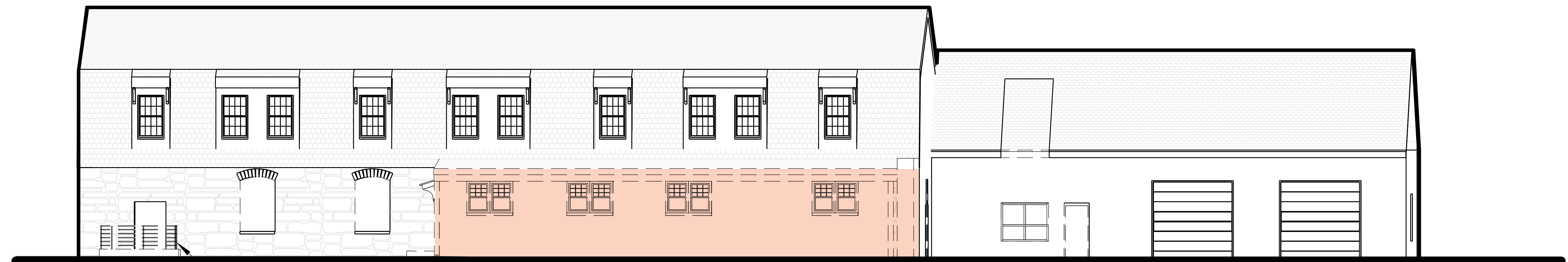
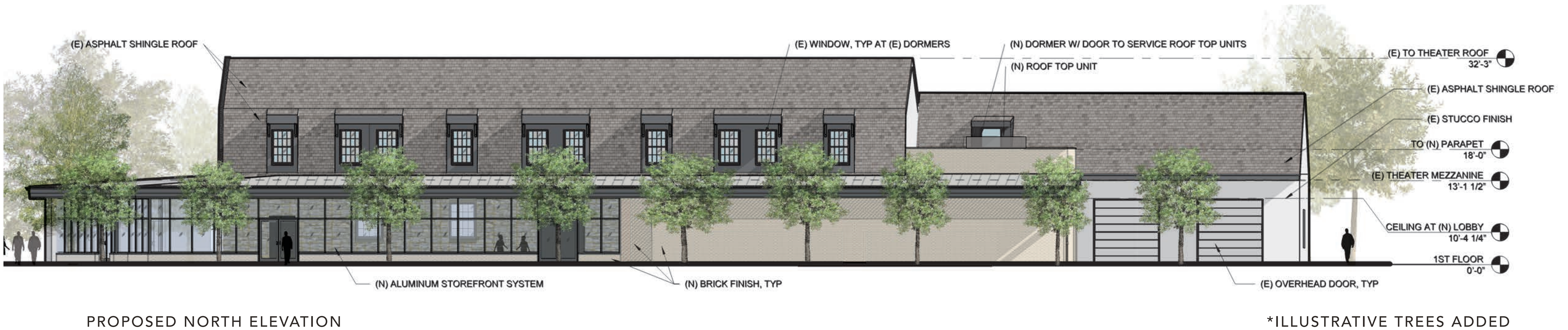
PROPOSED NORTH ELEVATION



EXISTING NORTH ELEVATION

ELEVATIONS

SPRINGSIDE CHESTNUT HILL ACADEMY: PERFORMING ARTS CENTER



ELEVATIONS

SPRINGSIDE CHESTNUT HILL ACADEMY: PERFORMING ARTS CENTER



PROPOSED BUILDING DESIGN

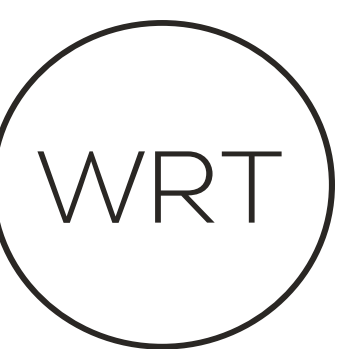


SPRINGSIDE CHESTNUT HILL ACADEMY: PERFORMING ARTS CENTER



*ILLUSTRATIVE TREES ADDED

PROPOSED BUILDING DESIGN



SPRINGSIDE CHESTNUT HILL ACADEMY: PERFORMING ARTS CENTER



SPRINGSIDE CHESTNUT HILL ACADEMY: PERFORMING ARTS CENTER



SPRINGSIDE CHESTNUT HILL ACADEMY: PERFORMING ARTS CENTER



SPRINGSIDE CHESTNUT HILL ACADEMY: PERFORMING ARTS CENTER



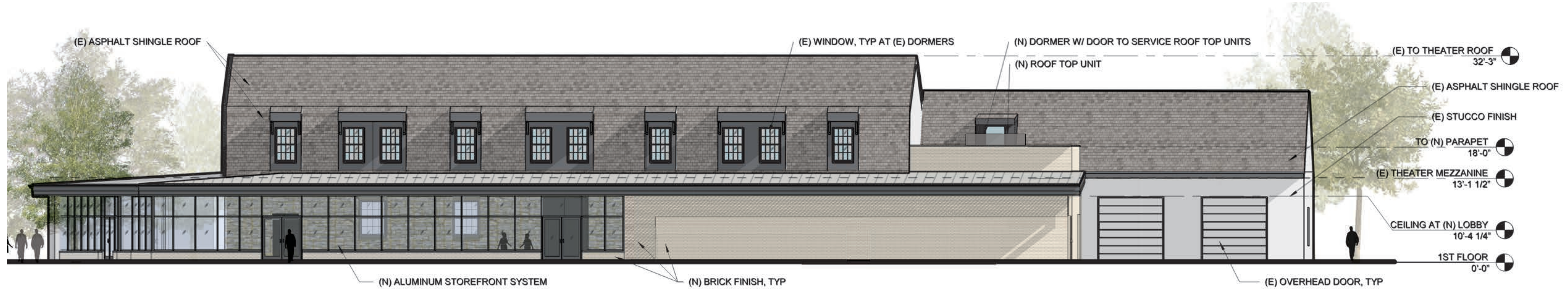
SPRINGSIDE CHESTNUT HILL ACADEMY: PERFORMING ARTS CENTER



SPRINGSIDE CHESTNUT HILL ACADEMY: PERFORMING ARTS CENTER



SPRINGSIDE CHESTNUT HILL ACADEMY: PERFORMING ARTS CENTER



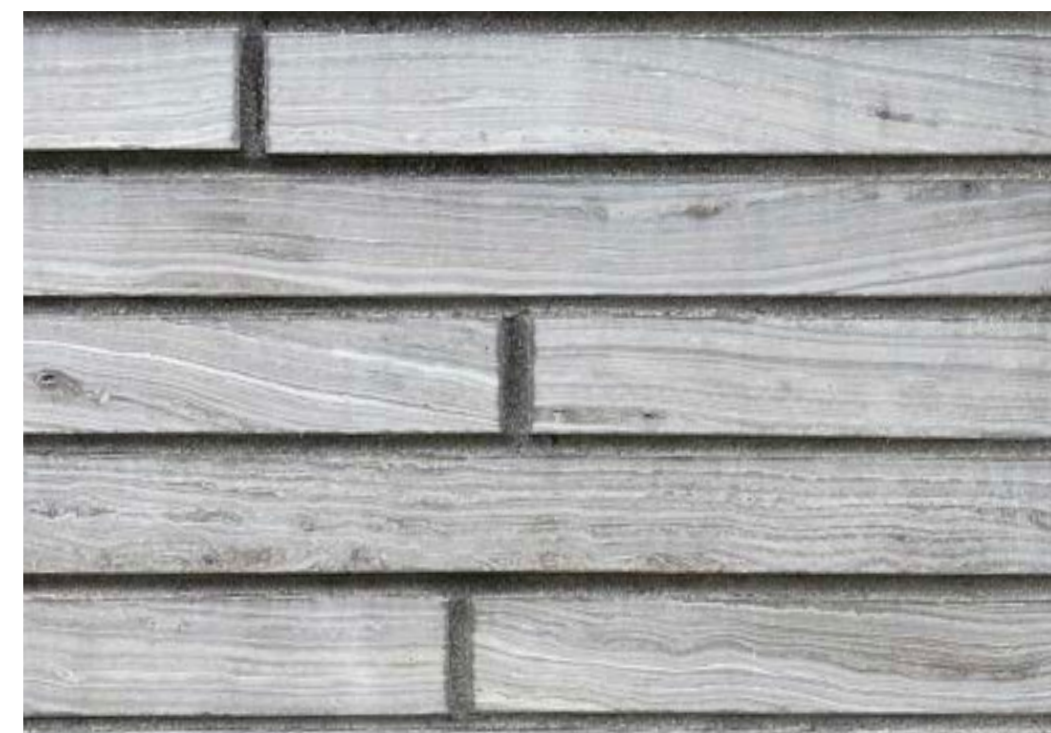
PROPOSED NORTH ELEVATION

CALCIUM SILICATE BRICK



GREY

LIMESTONE BRICK



SMOOTH

CLAY BRICK



GREY

ROOF SOFFIT / FINISH



EXTERIOR FINISH - STANDING METAL SEAM



SOFFIT - CYPRESS



SOFFIT - RED CEDAR



SOFFIT - AGED TEAK (SYNTHETIC PANEL)

EXISTING MATERIALS



EXISTING PHOTO

EXISTING MATERIALS/COLORS TO REMAIN:

- ASPHALT SHINGLE ROOF
- DORMER WALLS/WINDOWS/BRACKETS
- WISSAHICKON SCHIST STONE WALLS

I

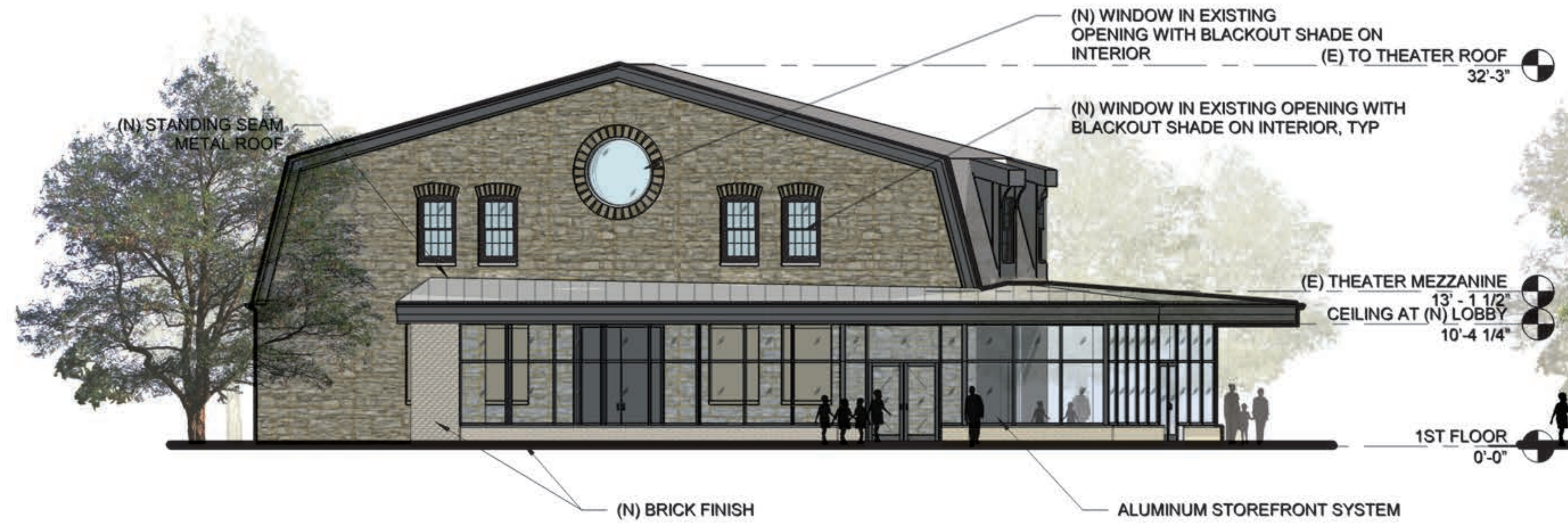
II

GREY SPLIT FACE

ROUGH

GREY WIRECUT

SPRINGSIDE CHESTNUT HILL ACADEMY: PERFORMING ARTS CENTER



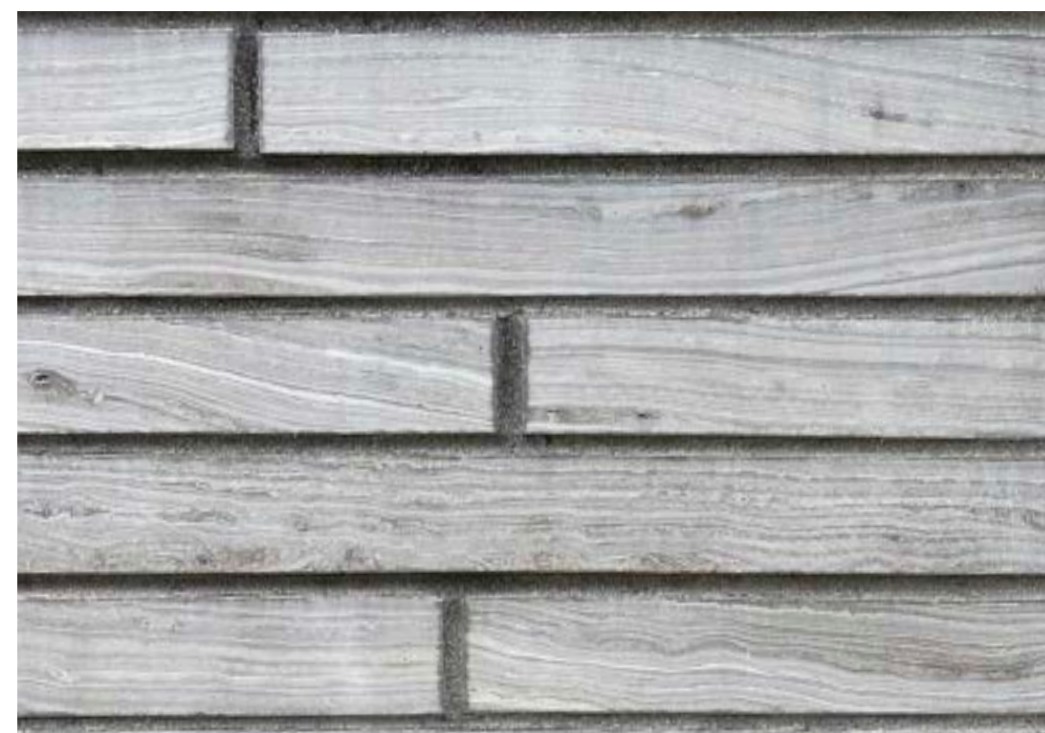
PROPOSED EAST ELEVATION

CALCIUM SILICATE BRICK



GREY

LIMESTONE BRICK



SMOOTH

CLAY BRICK



GREY

ROOF SOFFIT / FINISH



EXTERIOR FINISH - STANDING METAL SEAM



SOFFIT - CYPRESS



SOFFIT - RED CEDAR



SOFFIT - AGED TEAK (SYNTHETIC PANEL)

EXISTING MATERIALS



EXISTING PHOTO

EXISTING MATERIALS/COLORS TO REMAIN:

- ASPHALT SHINGLE ROOF
- DORMER WALLS/WINDOWS/BRACKETS
- WISSAHICKON SCHIST STONE WALLS

I

II



GREY SPLIT FACE



ROUGH

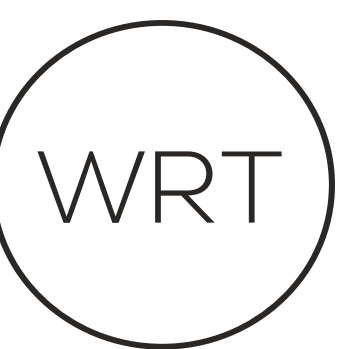


GREY WIRECUT

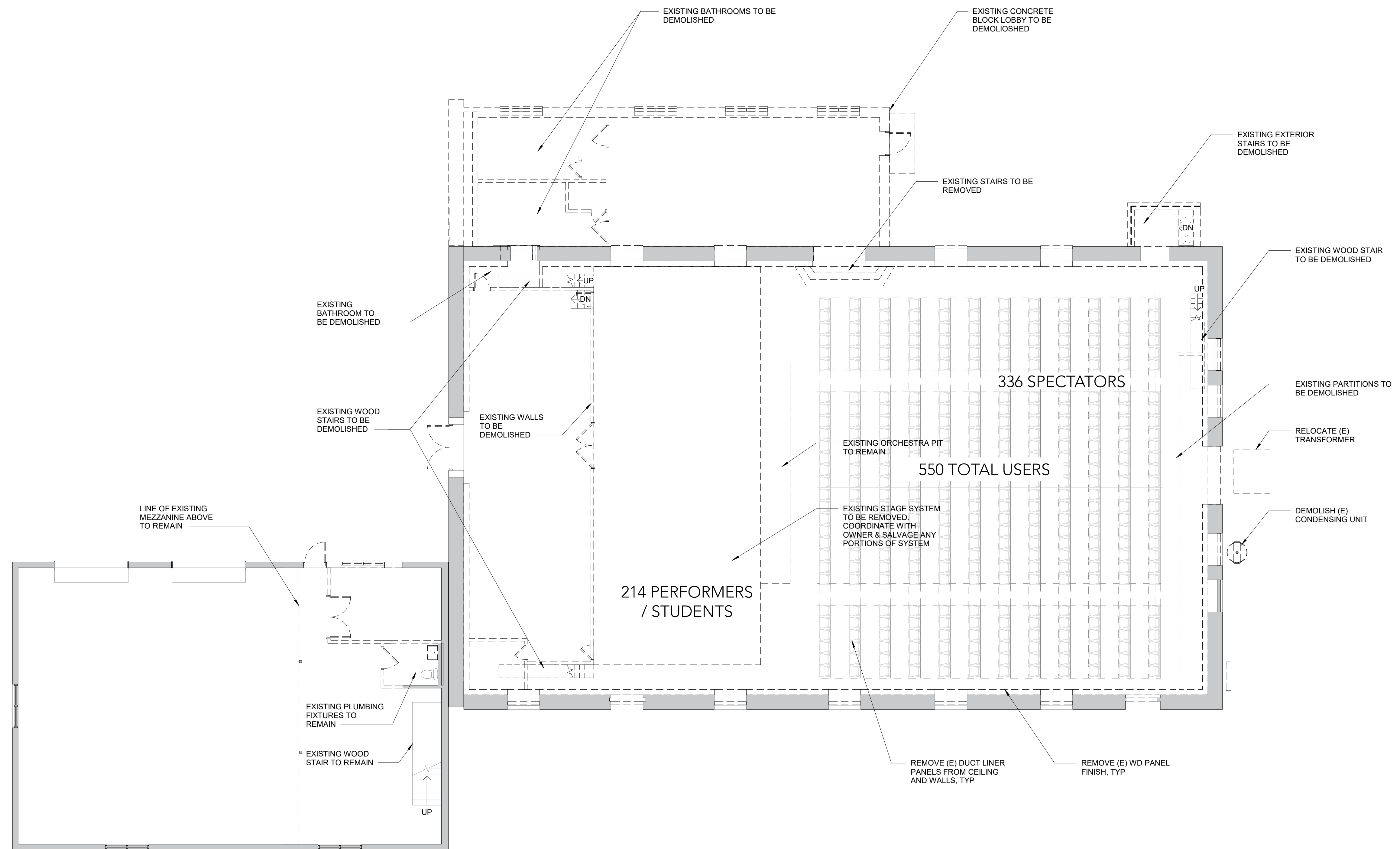
SPRINGSIDE CHESTNUT HILL ACADEMY: PERFORMING ARTS CENTER




PROPOSED DESIGN

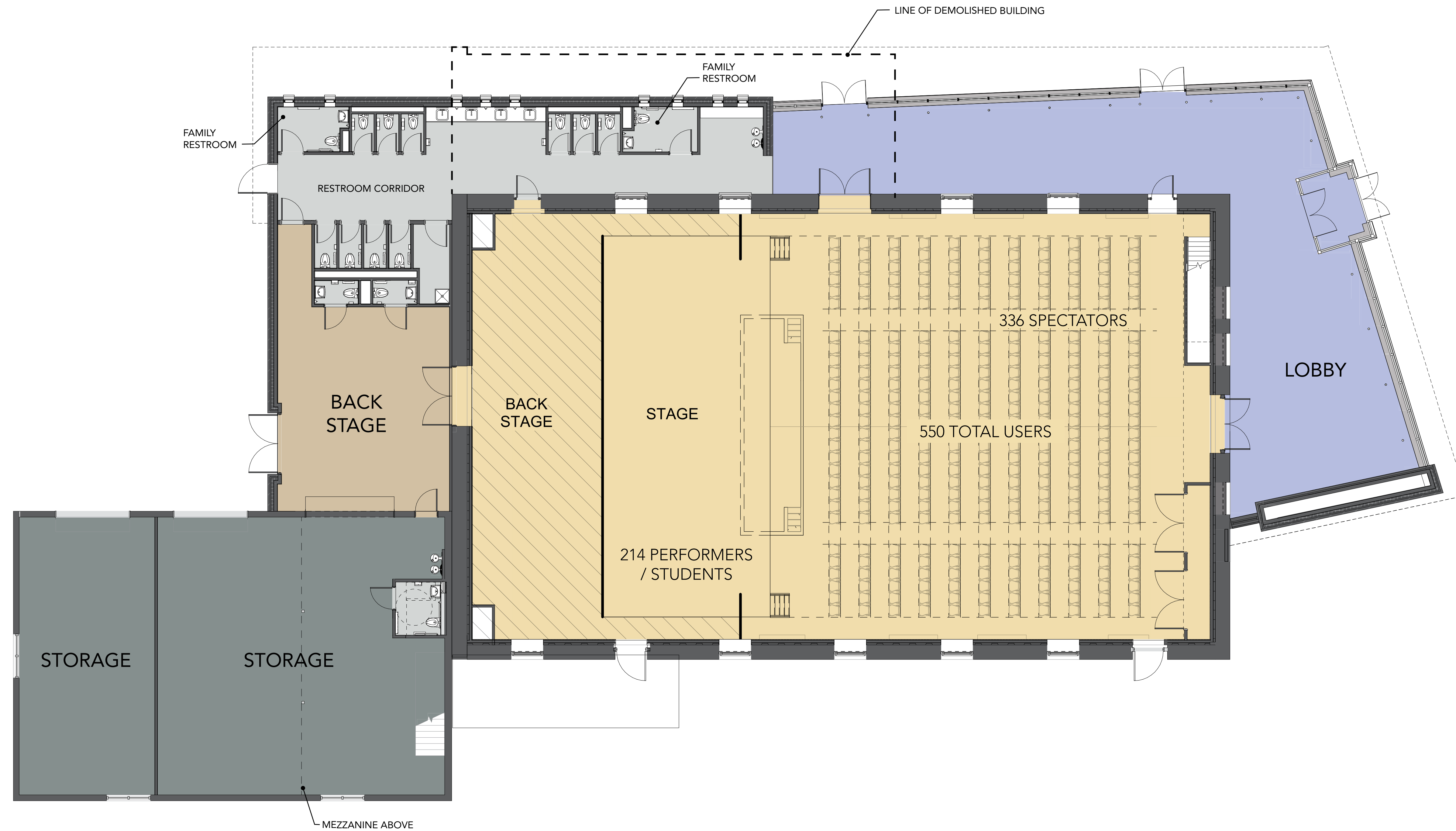



SPRINGSIDE CHESTNUT HILL ACADEMY: PERFORMING ARTS CENTER



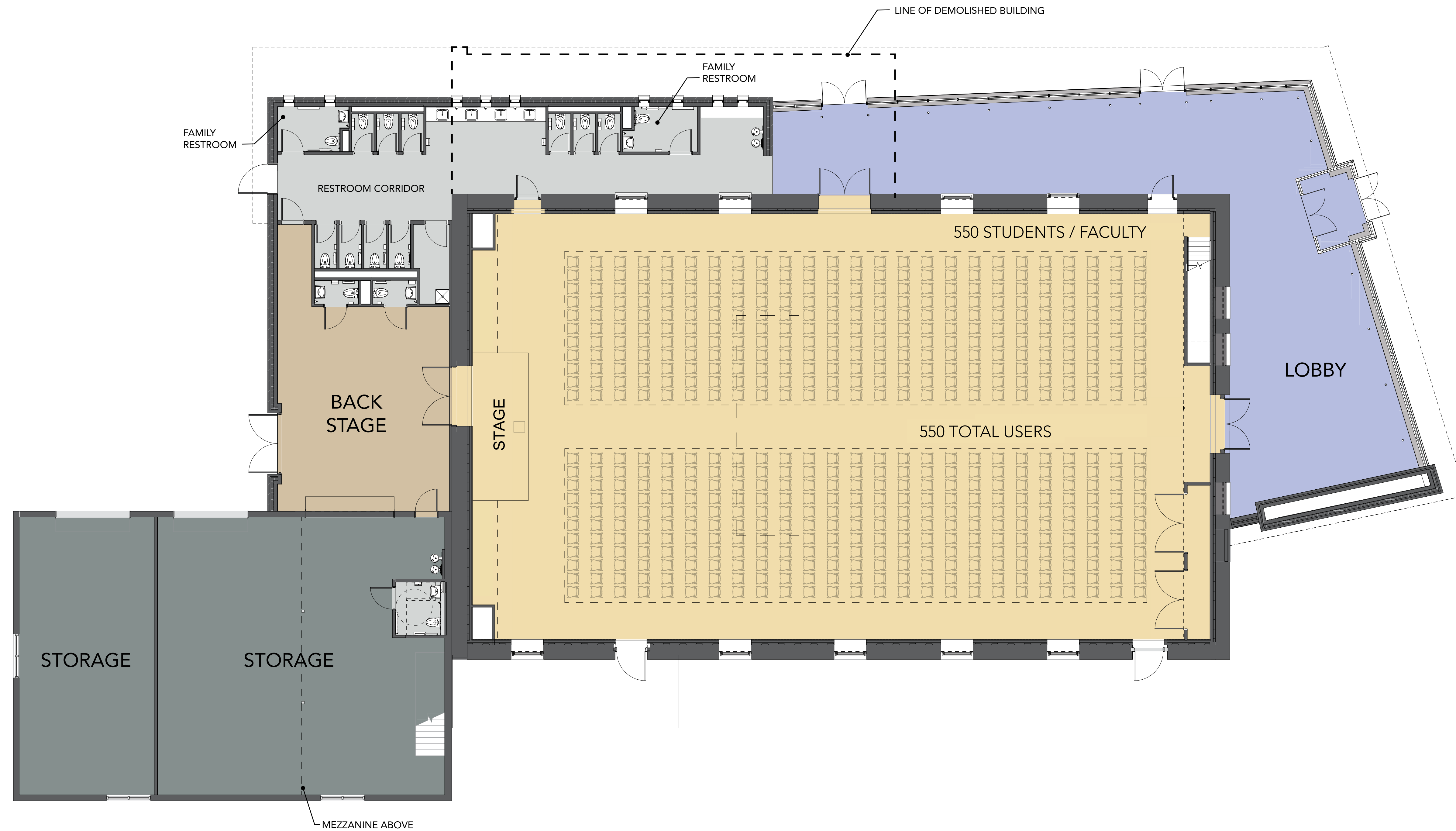
SCALE 1/8" = 1'-0" 


SPRINGSIDE CHESTNUT HILL ACADEMY: PERFORMING ARTS CENTER



SCALE 1/8" = 1'-0" 

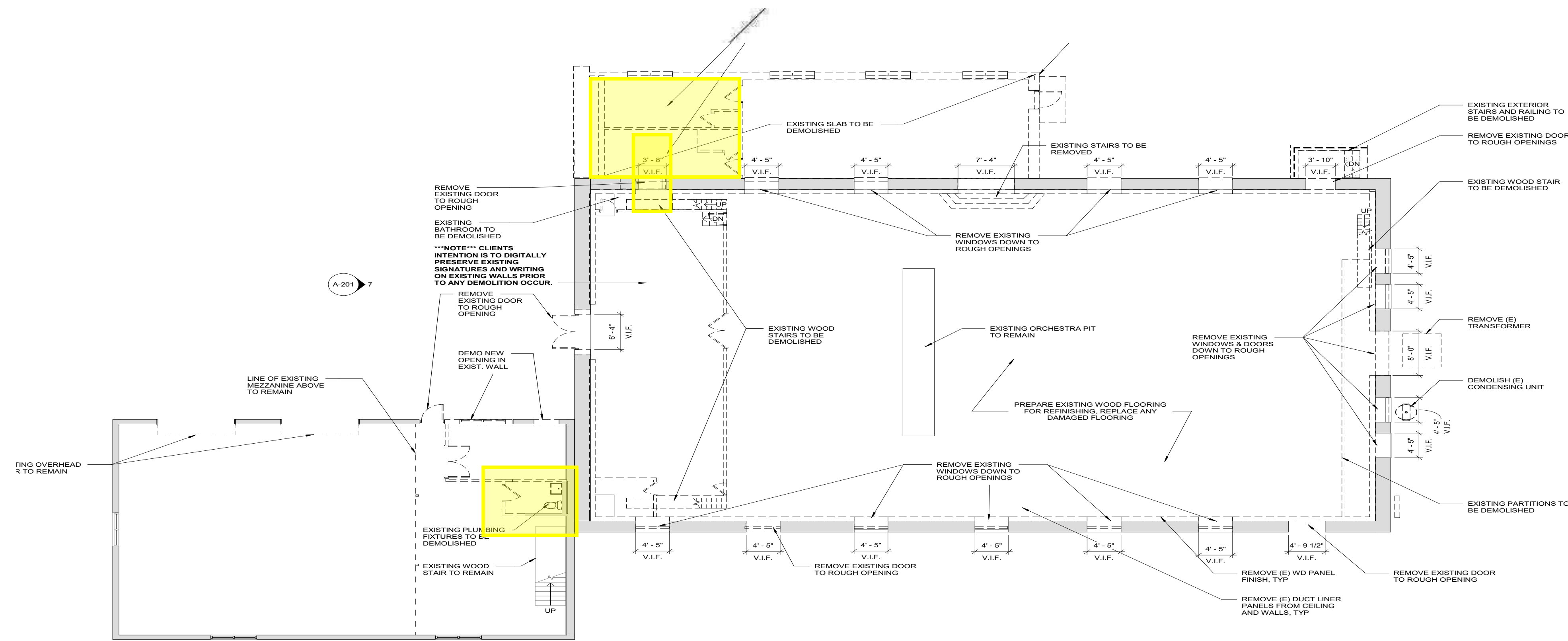
SPRINGSIDE CHESTNUT HILL ACADEMY: PERFORMING ARTS CENTER



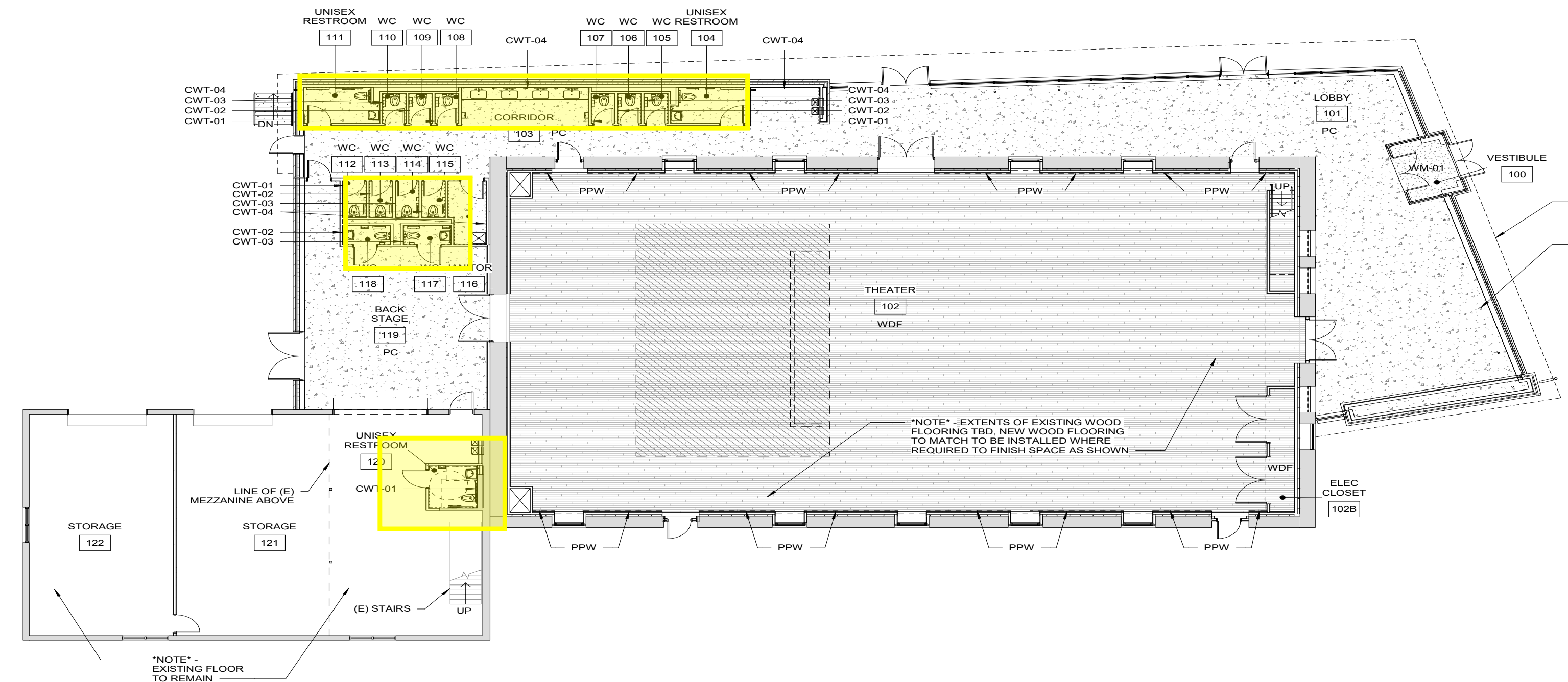
SCALE 1/8" = 1'-0" 



Bathrooms Existing / five commodes and one Urinal currently



Proposed Bathrooms / fifteen Commodes Projected



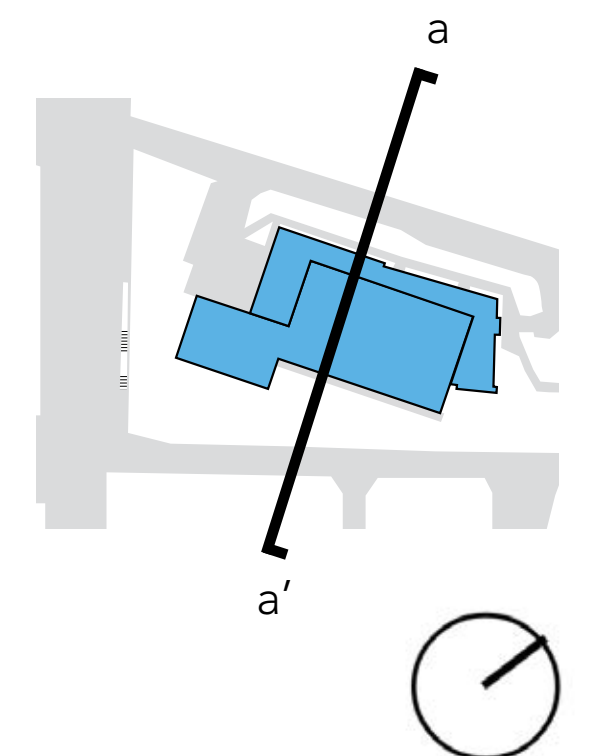
NOT TO SCALE



SPRINGSIDE CHESTNUT HILL ACADEMY: PERFORMING ARTS CENTER



SECTION A (a-a')

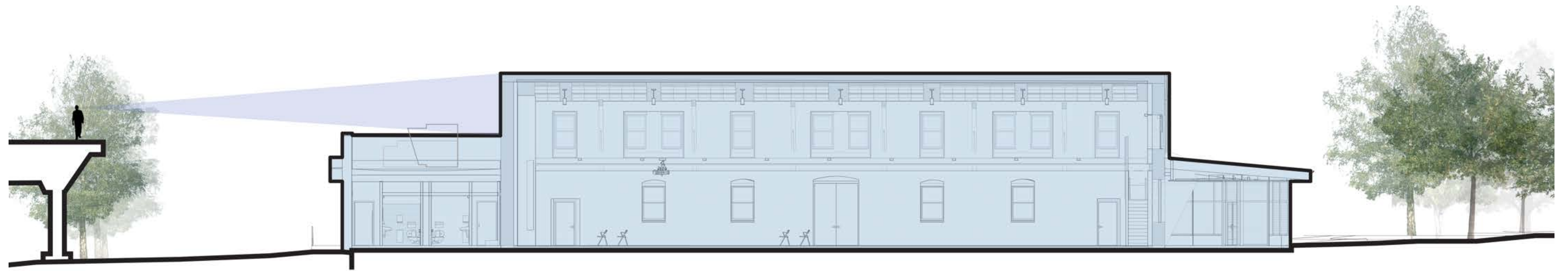


SPRINGSIDE CHESTNUT HILL ACADEMY: PERFORMING ARTS CENTER

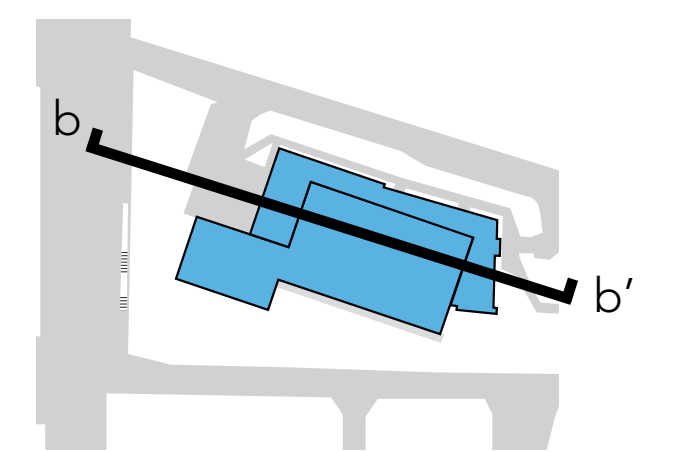


EXISTING STREET VIEWS

SPRINGSIDE CHESTNUT HILL ACADEMY: PERFORMING ARTS CENTER



SECTION B (b-b')



SPRINGSIDE CHESTNUT HILL ACADEMY: PERFORMING ARTS CENTER

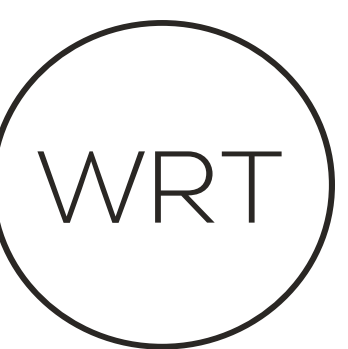


EXISTING STREET VIEWS

SPRINGSIDE CHESTNUT HILL ACADEMY: PERFORMING ARTS CENTER



THANK YOU



SPRINGSIDE CHESTNUT HILL ACADEMY: PERFORMING ARTS CENTER



EXISTING STREET VIEWS

SPRINGSIDE CHESTNUT HILL ACADEMY: PERFORMING ARTS CENTER



EXISTING STREET VIEWS

SPRINGSIDE CHESTNUT HILL ACADEMY: PERFORMING ARTS CENTER



EXISTING STREET VIEWS

SPRINGSIDE CHESTNUT HILL ACADEMY: PERFORMING ARTS CENTER

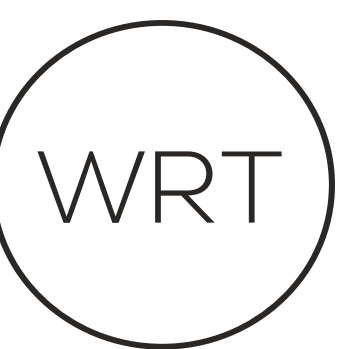


EXISTING STREET VIEWS

SPRINGSIDE CHESTNUT HILL ACADEMY: PERFORMING ARTS CENTER



EXISTING STREET VIEWS



SPRINGSIDE CHESTNUT HILL ACADEMY: PERFORMING ARTS CENTER

